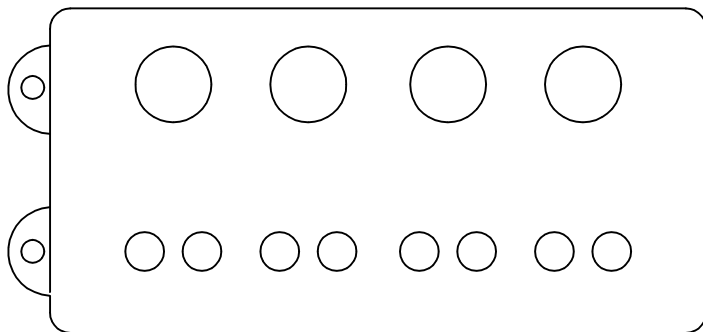
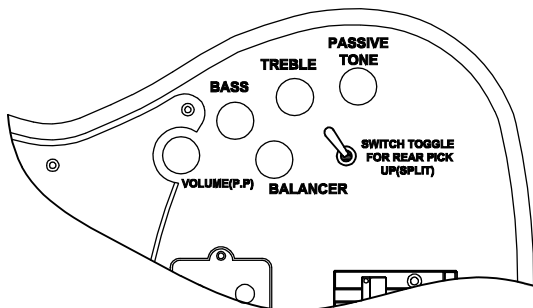


PTP3010
63FPB-BLK<PLA#42 / 10800T>ANC#5



MUSICMAN +JAZZ HUMBUCKER



BALANCER
1609-D20RL-A500K+C500K

VOLUME/ACTIVE&PASSIVE
1607-D20RL-10B500K(P.P)

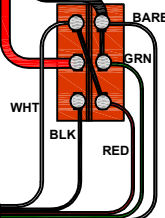
TREBLE
1608-D18RL-B100K

JACK
EG-3P

BASS
1608-D18RL-B100K

BLK
WH

ALL IN ONE
BASS TOGGLE

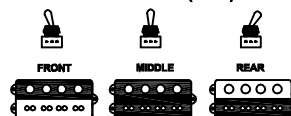


REAR
FRONT
MYLAR
0,1 UF

PASSIVE TONE
1608-D18RL-B250K

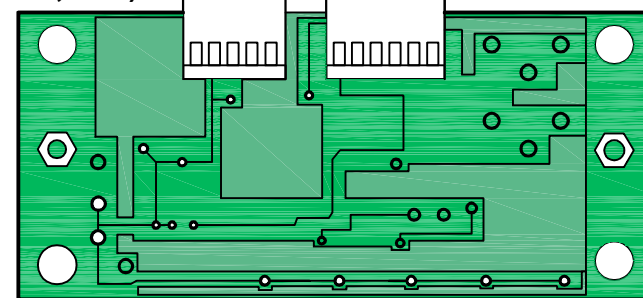
SANDBERG 2-BAND
(1VOL(P.P),2 TONE,1BAL)

SWITCH TOGGLE POSITION
FOR REAR PICK UP(SPLIT)



○ = TANDA LINGKAR POSISI
SOLDER, SUDAH TUKAR DARI
ASLINYA SANBERG (BIAR
PASSIVE TONE FUNGSI)

- PASSIVE TONE FUNGSI,JIKA PUSH PULL UP



WHITE

YELLOW

RED

BROWN

BLUE

WHITE

PINK

GREY

YELLOW

PURPLE

GREEN

RED

BATTERY 9 V

PT. CORT INDONESIA

MODEL NAME **CORT-GB74PH W/PICKGUARD WING**

DRAWING NO

APPROVED BY

CHECKED BY

DESIGN BY

DRAWING BY