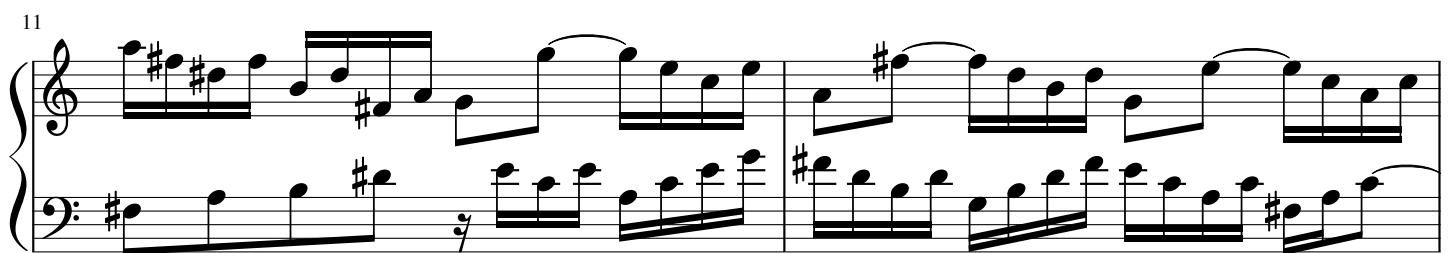
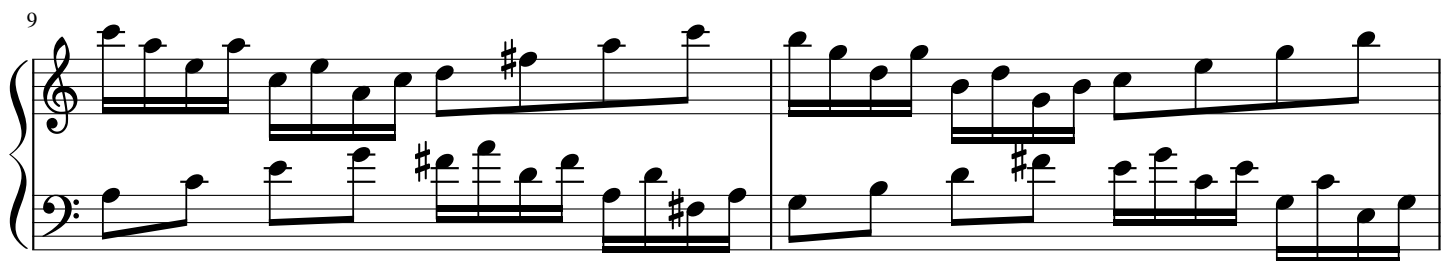
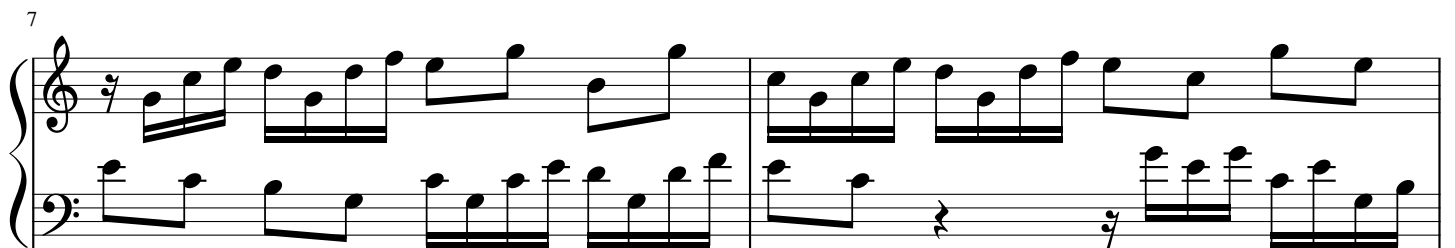
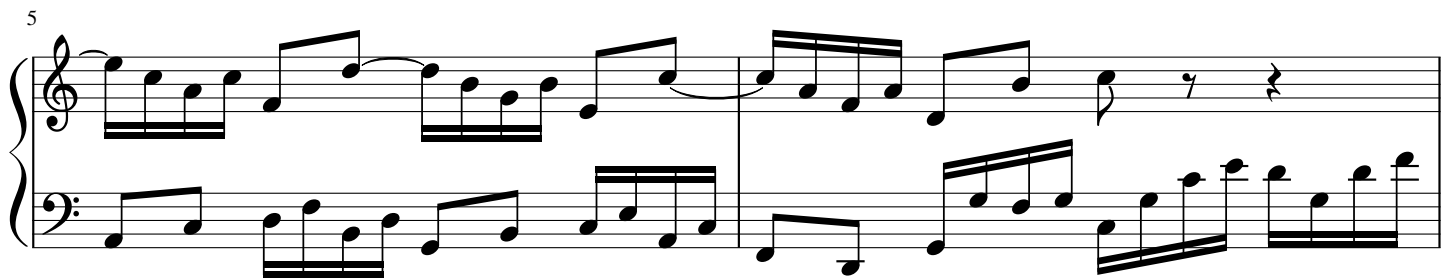
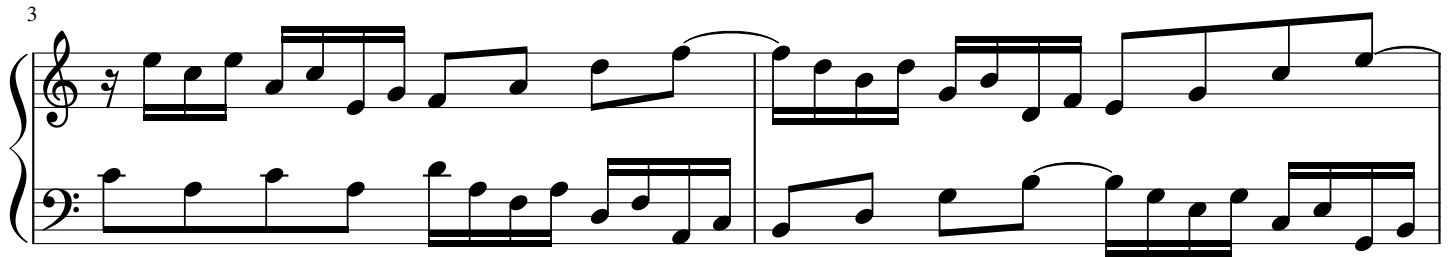
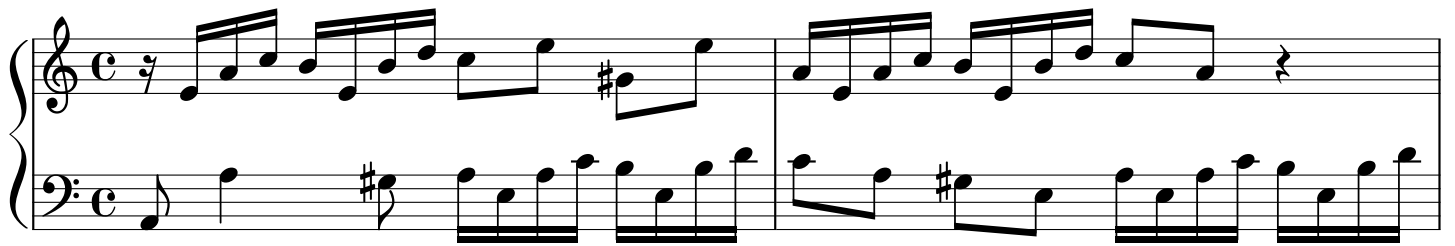


Invention Nr. 13

BWV 784

Johann Sebastian Bach (1685-1750)



13

Measures 13 and 14 of a piano piece. Measure 13 features a treble staff with a series of eighth notes (F#4, G#4, A4, B4, C5, B4, A4, G#4, F#4) and a bass staff with a series of eighth notes (F#3, G#3, A3, B3, C4, B3, A3, G#3, F#3). Measure 14 continues the pattern with a treble staff (G#4, A4, B4, C5, B4, A4, G#4, F#4) and a bass staff (F#3, G#3, A3, B3, C4, B3, A3, G#3, F#3).

15

Measures 15 and 16. Measure 15: Treble staff (F#4, G#4, A4, B4, C5, B4, A4, G#4, F#4), Bass staff (F#3, G#3, A3, B3, C4, B3, A3, G#3, F#3). Measure 16: Treble staff (G#4, A4, B4, C5, B4, A4, G#4, F#4), Bass staff (F#3, G#3, A3, B3, C4, B3, A3, G#3, F#3).

17

Measures 17 and 18. Measure 17: Treble staff (F#4, G#4, A4, B4, C5, B4, A4, G#4, F#4), Bass staff (F#3, G#3, A3, B3, C4, B3, A3, G#3, F#3). Measure 18: Treble staff (G#4, A4, B4, C5, B4, A4, G#4, F#4), Bass staff (F#3, G#3, A3, B3, C4, B3, A3, G#3, F#3).

19

Measures 19 and 20. Measure 19: Treble staff (F#4, G#4, A4, B4, C5, B4, A4, G#4, F#4), Bass staff (F#3, G#3, A3, B3, C4, B3, A3, G#3, F#3). Measure 20: Treble staff (G#4, A4, B4, C5, B4, A4, G#4, F#4), Bass staff (F#3, G#3, A3, B3, C4, B3, A3, G#3, F#3).

21

Measures 21 and 22. Measure 21: Treble staff (F#4, G#4, A4, B4, C5, B4, A4, G#4, F#4), Bass staff (F#3, G#3, A3, B3, C4, B3, A3, G#3, F#3). Measure 22: Treble staff (G#4, A4, B4, C5, B4, A4, G#4, F#4), Bass staff (F#3, G#3, A3, B3, C4, B3, A3, G#3, F#3).

23

Measures 23 and 24. Measure 23: Treble staff (F#4, G#4, A4, B4, C5, B4, A4, G#4, F#4), Bass staff (F#3, G#3, A3, B3, C4, B3, A3, G#3, F#3). Measure 24: Treble staff (G#4, A4, B4, C5, B4, A4, G#4, F#4), Bass staff (F#3, G#3, A3, B3, C4, B3, A3, G#3, F#3).

25

Measures 25 and 26. Measure 25: Treble staff (F#4, G#4, A4, B4, C5, B4, A4, G#4, F#4), Bass staff (F#3, G#3, A3, B3, C4, B3, A3, G#3, F#3). Measure 26: Treble staff (G#4, A4, B4, C5, B4, A4, G#4, F#4), Bass staff (F#3, G#3, A3, B3, C4, B3, A3, G#3, F#3).