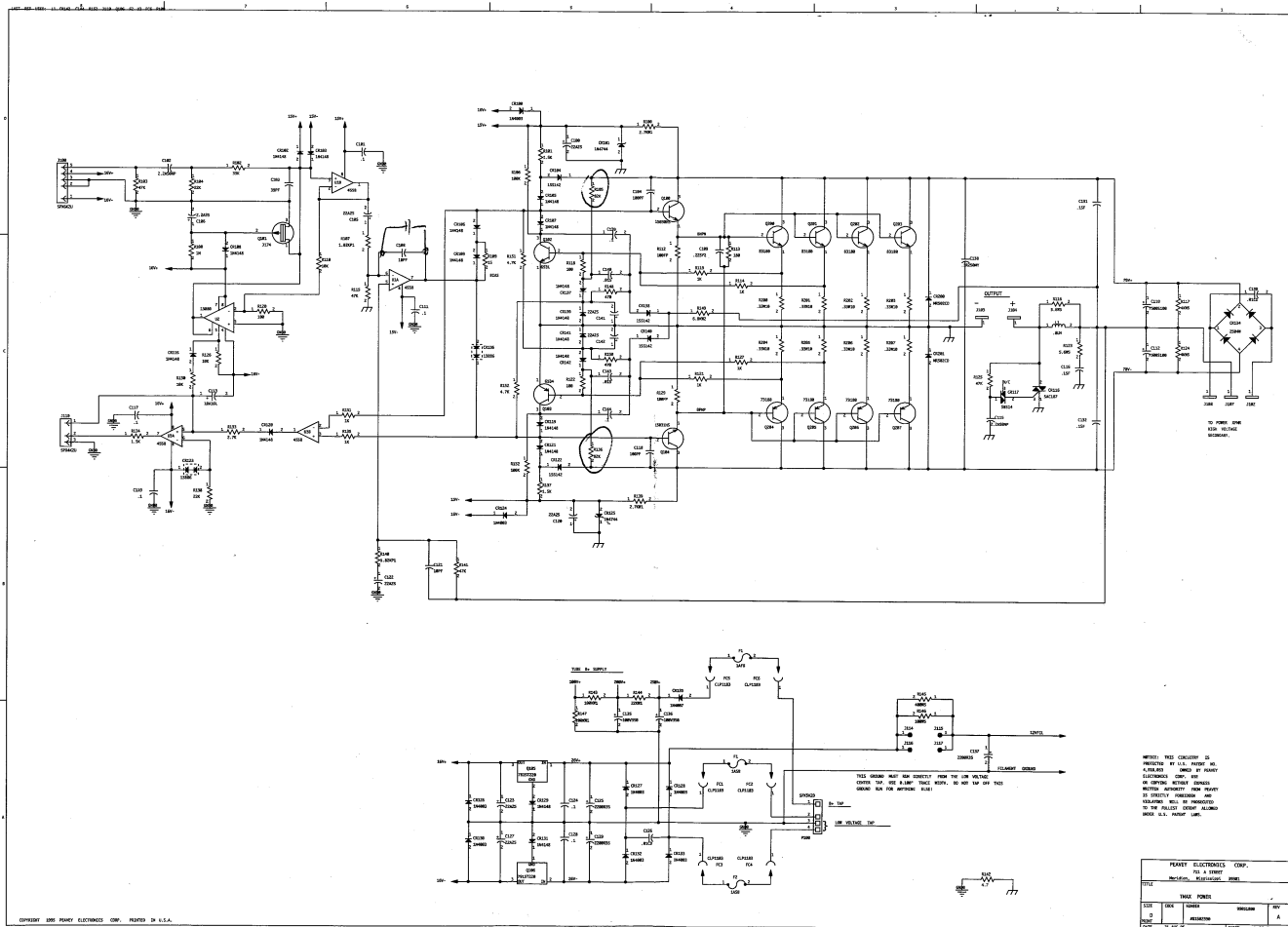
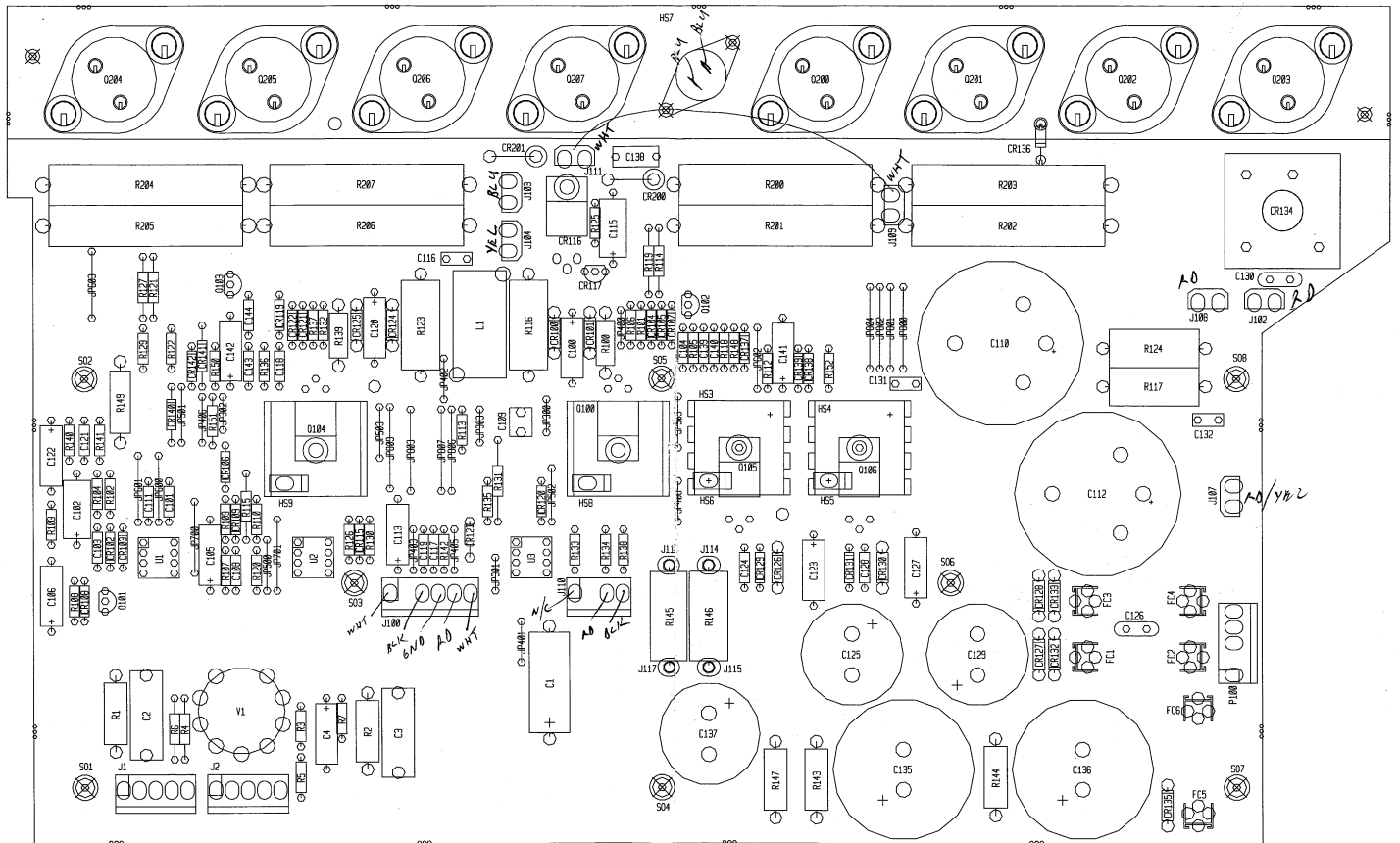


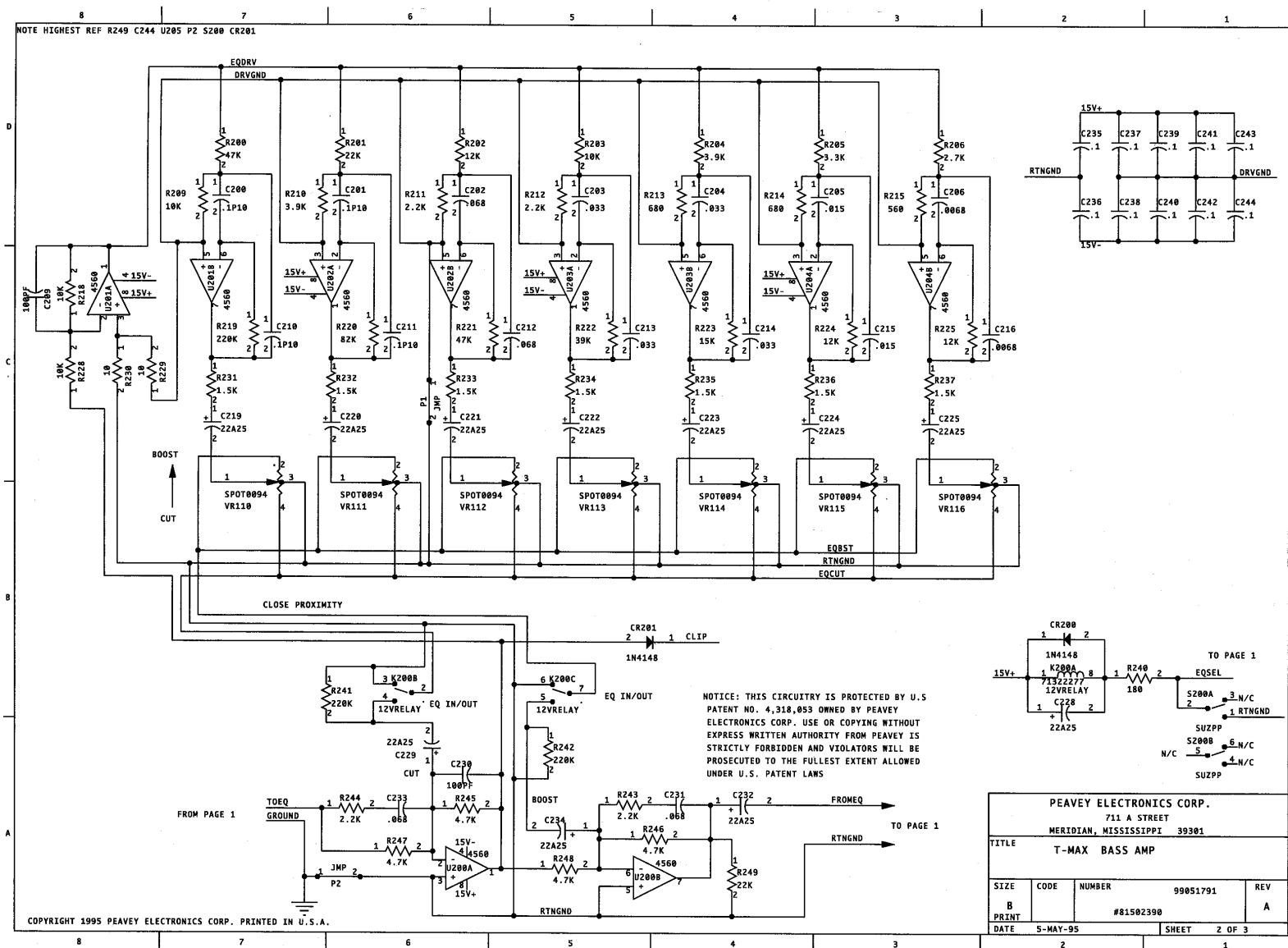
T-MAX PRE-AMP

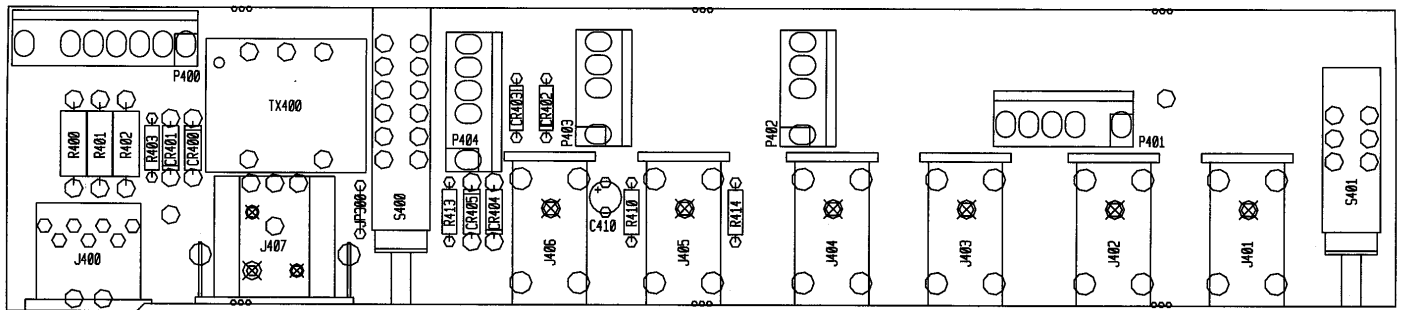


PEASEY ELECTRONICS CORP.				
TITLE: POWER SUPPLY				
REVISION: 1.0				
REV	DATE	BY	CHKD	APP
1	10/10/78	PEASEY		
2	11/10/78	PEASEY		



T-MAX POWER BD.



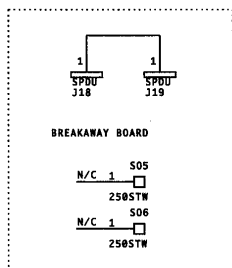
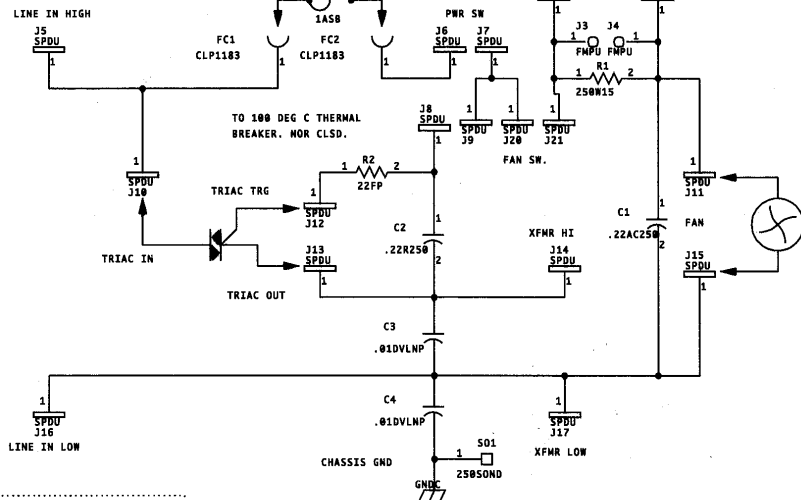


T-MAX PATCH BD.

BOARD NAME: TMAXPTCH ASSEMBLY LEVEL NUMBER: 99051781				
CBDS				
** QTY.	NAME	VALUE	PART NUMBER	DESCRIPTION AND DEVICE DESIGNATIONS *****
1	22R50	22R50	70320181	22MP--20%--50VDC--EL--76A C410
2	1N4003	1N4003	70464003	1N4003 200V SILICON DIODE CR400, CR401
2	1N4148	4148	70464148	1N4148 75V 10MA SILICON DIODE CR402, CR403
2	1N4003	1N4003	70464003	1N4003 200V SILICON DIODE CR404, CR405
1	DIN78A	71466226	71466226	CONN 7P R/A PCMT DIN W/ 4 MNT. HOLES J400
6	RAM6164	71466164	71466164	JK R/A 12.5MM NIN MONO -88 J401, J402, J403, J404, J405, J406
1	FXLRMRAB	71466181	71466181	XLB CONN R/A MALE W/BRKT J407
1	SPX8K7U	SPX8K7U	XXXXXXXX	7 EACH OF STAKE PINS P400
1	SPX6K2U	SPX6K2U	XXXXXXXX	5 EACH OF STAKED PINS P401
2	SPX5K2U	SPX5K2U	73717003	4 EACH STAKED PINS P402, P403
1	SPX6K2U	SPX6K2U	XXXXXXXX	5 EACH OF STAKED PINS P404
3	1.5KW1	1.5KW1	70210007	1.5K-1W-5%--MO--T6R R400, R401, R402
1	47	47	70240008	47--1/4W-5%--CP--T6R R403
1	1K	1K	70240017	1K--1/4W-5%--CP--T6R R410
1	47	47	70240008	47--1/4W-5%--CP--T6R R413
1	22K	22K	70240029	22K-1/4W-5%--CP--T6R R414
1	DRASW	DRASW	71322256	PC MNT SWITCH DUAL S400
1	PRASW	PRASW	71322289	DPDT P/P CB MNT SWITCH S401
1	DA94	DA94	70500094	OUTPUT TRANSFORMER TX400



8	7	6	5	4	3	2	1
---	---	---	---	---	---	---	---



NOTICE: THIS CIRCUITRY IS PROTECTED BY U.S.
PATENT NO. 4,318,053 OWNED BY PEAVEY
ELECTRONICS CORP. USE OR COPYING WITHOUT
EXPRESS WRITTEN AUTHORITY FROM PEAVEY IS
STRICTLY FORBIDDEN AND VIOLATORS WILL BE
PROSECUTED TO THE FULLEST EXTENT ALLOWED
UNDER U.S. PATENT LAWS

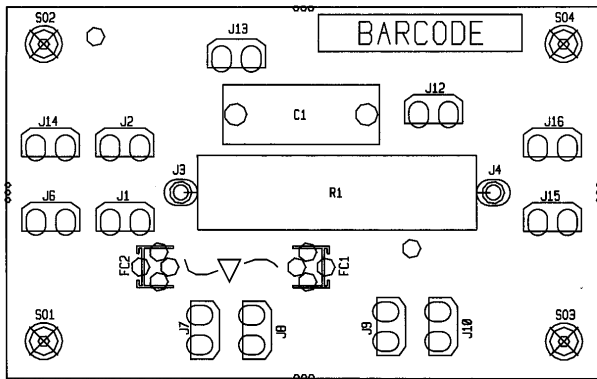
COPYRIGHT 1995 PEAVEY ELECTRONICS CORP. PRINTED IN U.S.A.

N/C 1 S04
250STW

N/C 1 S03
250STW

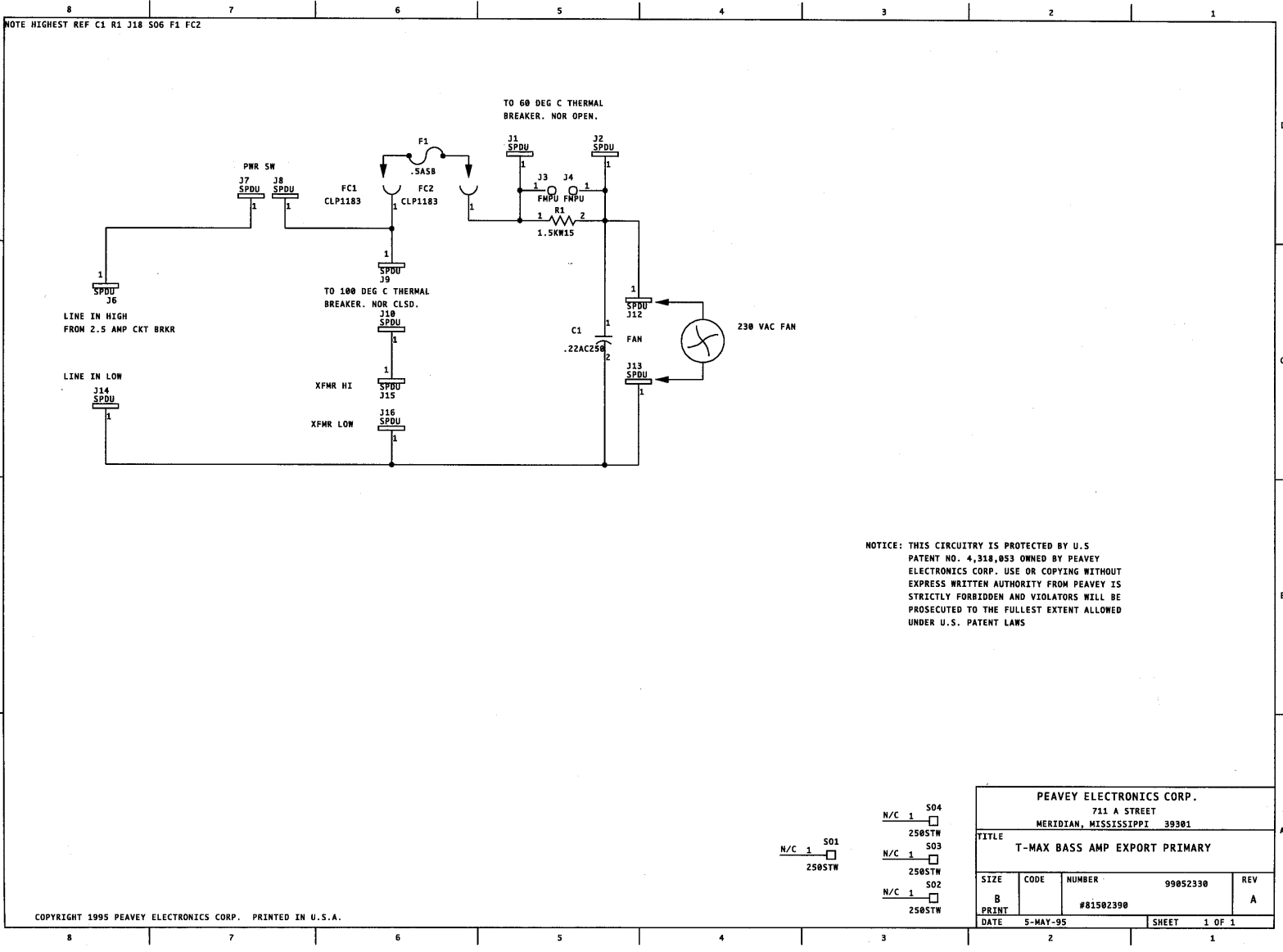
N/C 1 S02
250STW

PEAVEY ELECTRONICS CORP.				
711 A STREET				
MERIDIAN, MISSISSIPPI 39301				
TITLE				
T-MAX BASS AMP				
SIZE	CODE	NUMBER	99051821	REV
B				A
PRINT	#81502390			
DATE	5-MAY-95	SHEET	1	OF 1

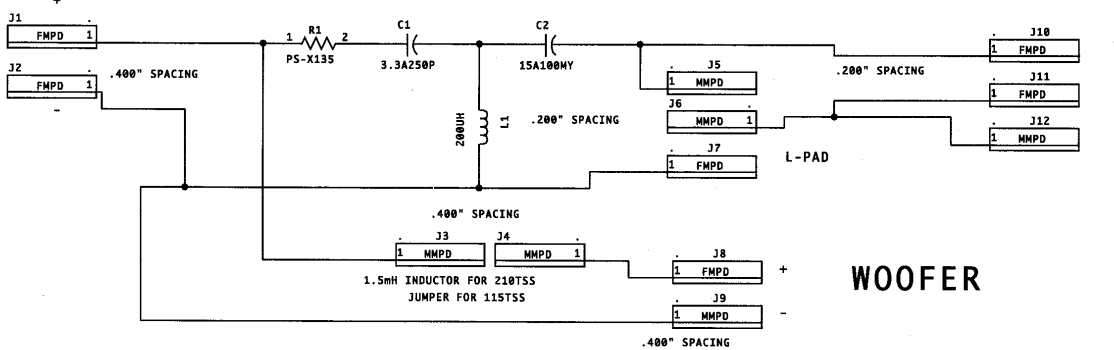


T-Max Primary
220-240V (Export)

BOARD NAME: TMAX230			
ASSEMBLY LEVEL NUMBER: 99052330			
PART	VALUE	NUMBER	DESCRIPTION AND
* QTY. NAME	VALUE	NUMBER	DEVICE DESIGNATIONS *****
1	.22AC250	.22AC250, 70320161	.22 mfd 20% 250vac my r/a
2	CLP1183	CLP1183 70901183	C1
2	SPDU	73716194 73716194	FUSECLIP, FC MT - T&A
2	FMPU	73711811 73711811	FC1, FC2
10	SPDU	73716194 73716194	.250 PC MNT SPADE .093 PCB
1	1.5KW15	1.5KW15 70250068	J1, J2
4	2508TW	70901856 70901856	M118-171 C.B. FEMALE MOLEX PIN
			J3, J4
			.250 PC MNT SPADE .093 PCB
			J6, J7, J8, J9, J10, J12, J13, J14, J15,
			J16
			1500-15W-10%-WW-AXL
			R1
			SPCR, 1/4,R(#4),.187 SW,AL
			S01, S02, S03, S04



INPUT



TWEETER OUTPUT

WOOFER

NOTICE: THIS CIRCUITRY IS PROTECTED BY U.S. PATENT NO. 4,318,053 OWNED BY PEAVEY ELECTRONICS CORP. USE OR COPYING WITHOUT EXPRESS WRITTEN AUTHORITY FROM PEAVEY IS STRICTLY FORBIDDEN AND VIOLATORS WILL BE PROSECUTED TO THE FULLEST EXTENT ALLOWED UNDER U.S. PATENT LAWS

PEAVEY ELECTRONICS CORP. 711 A STREET MERIDIAN, MS 39301			
TITLE T-MAX X-OVER			
SIZE B	CODE	NUMBER 99051840 #81502390	REV
DATE 8-MAY-95	SHEET		



* PART	LEVEL	PART	DESCRIPTION AND	
* QTY.	NAME	VALUE	NUMBER	DEVICE DESIGNATIONS *****
1	3.3A250P	3.3A250P	70320176	3.3MF 10% 250VDC PP AXL C1
1	15A100MY	15UF100	70320195	15 MFD CAPACITOR 10% 100V - AXIAL C2
2	FMPD	73711811	73711811	M118-171 C.B. FEMALE MOLEX PIN J1, J2
4	MMPD	73711812	73711812	R93-12 PN C.B. MALE MOLEX PIN J3, J4, J5, J6
2	FMPD	73711811	73711811	M118-171 C.B. FEMALE MOLEX PIN J7, J8
1	MMPD	73711812	73711812	R93-12 PN C.B. MALE MOLEX PIN J9
2	FMPD	73711811	73711811	M118-171 C.B. FEMALE MOLEX PIN J10, J11
1	MMPD	73711812	73711812	R93-12 PN C.B. MALE MOLEX PIN J12
1	200UH	200UH	96000176	200UH AIR CORE INDUCTOR COMP/SP-3 L1
1	PS-X135	PS-X135	70420199	1.35A, PTC, RESISTIVE FUSE R1