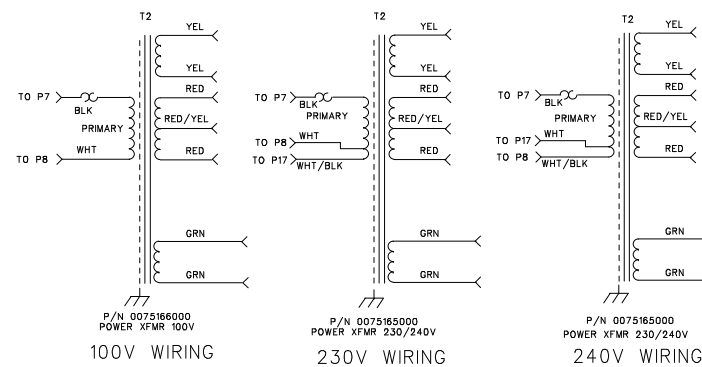
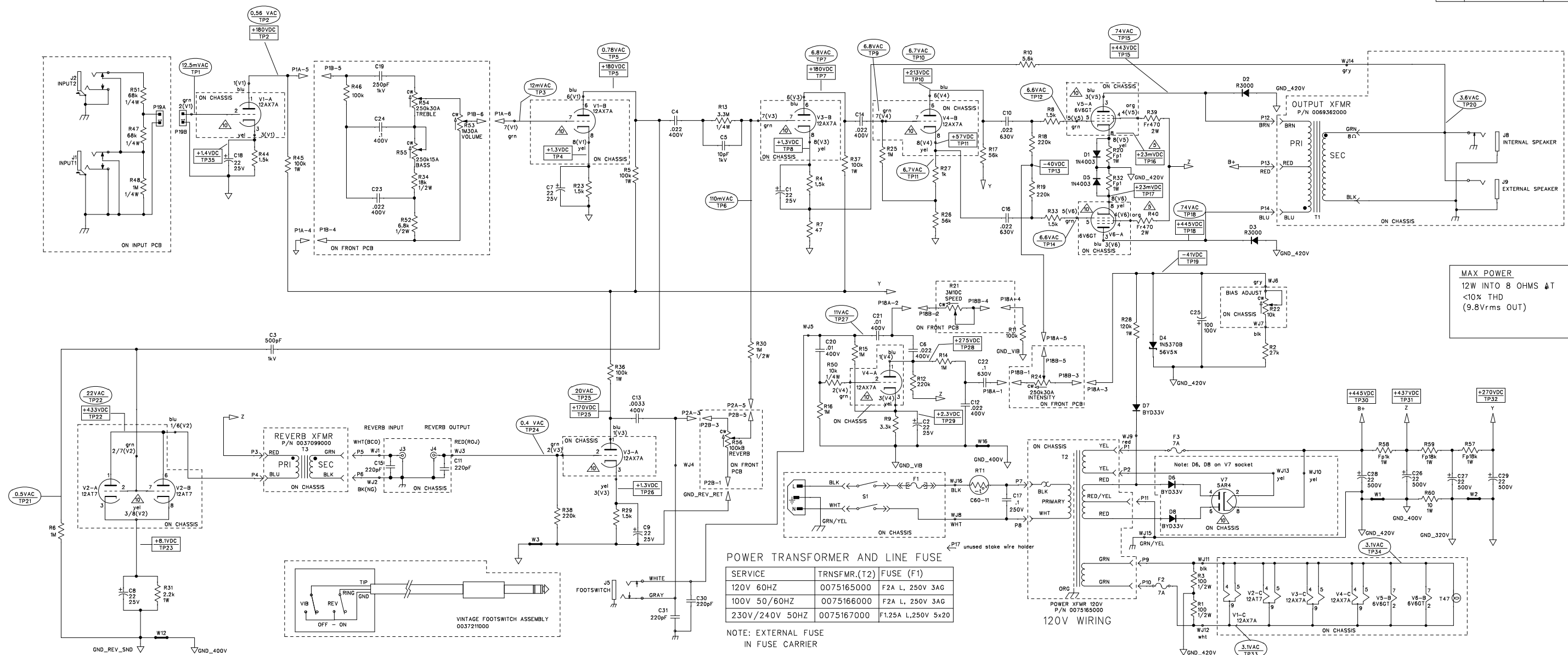


R E V I S I O N S			
REV.	DESCRIPTION	DATE	APPROVED
B	PR2946	24-JUL-13	S M M
C	EC13001	29-OCT-13	S M M



⑩ TUBE COMPLEMENT (INSTALLED AT PRODUCTION):

7. AC AND DC VOLTAGES READ TO GROUND WITH  
A DVM UNDER THE FOLLOWING CONDITIONS:  
UNIT AT RATED LINE VOLTAGE  
8 OHM RESISTIVE LOAD CONNECTED AT SPEAKER JACK  
NO FOOTSWITCH CONNECTED  
NO INPUT SIGNAL ON DC TESTS (TP = SQUARE BOXES).  
ADDITIONAL NOTES FOR DC TESTS (TP = OVALS):  
INPUT TO J1 SET TO 12.5mv SINE WAVE AT 1 KHZ.  
REVERB CONTROL AT "0".  
REVERB IN/TP 0064063000 DISCONNECTED AND J3 AND J4 JUMPED.  
BASS, TREBLE AND MIDDLE CONTROLS SET TO 5.  
SPEECH/INTENSITY AT 0, EXCEPT FOR TP35 TEST; SET AT 5.5.

6. ALL TUBES IN CHASSIS MOUNTED SOCKETS.
- BIAS IS SET BY MEASURING VOLTAGE AT GRID 1  
(WITH NO SIGNAL APPLIED & TUBES WARMED UP).
- SET VOLT/METER TO MV RANGE, SET 6VB BIAS CURRENT  
BY ADJUSTING BIAS CONTROL POT R22.
- SPECIFIED VOLTAGE IS 23mv AT POT R22.
- VOLTAGE AT TP17 SHOULD BE WITHIN 20% OF TP16 VOLTAGE.
- TYPICAL NEGATIVE BIAS VOLTAGE (W6 TO CH5) IS -40VDC.
4. THIS SCHEMATIC IS FOR PCB FABRICATION P/N 00751557000 AND  
PCB ASSEMBLY P/N 009987200.
5. ALL POLARIZED CAPACITORS IN JF<sub>2</sub>, 50V MINIMUM.
6. ALL UNPOLARIZED CAPACITORS IN JF<sub>2</sub>, 10X OR BETTER; 50V MINIMUM  
(POWER SUPPLY BYPASS CAPACITORS ARE 20X).
7. ALL RESISTORS IN OHMS, 5% 1/2W, UNLESS NOTED.

NOTES: (UNLESS OTHERWISE NOTED)

THIS DOCUMENT CONTAINS INFORMATION OF A PROPRIETARY NATURE TO FENDER MUSICAL INSTRUMENTS AND IS SUBMITTED TO YOU IN CONFIDENCE AND SHALL NOT BE DISCLOSED OR TRANSMITTED TO OTHERS WITHOUT AUTHORIZATION FROM FENDER MUSICAL INSTRUMENTS.

CHECKED BY: \_\_\_\_\_  
DATE: \_\_\_\_\_

APPROVED BY: \_\_\_\_\_  
DATE: \_\_\_\_\_

DATE: _____	
DRAWN: GIT'LO	ENGR: GIT'LO
DATABASE FILE: 72846S SCH	

**Fender®** MUSICAL INSTRUMENTS  
Corona, CA U.S.A.

TITLE: SERVICE DIAGRAM, COMBINED (schematic)
'68 CUSTOM PRINCETON BEVERB

SIZE	DRAWING NUMBER	REV.
------	----------------	------

D	7701465000	C
RELEASE DATE: 25-JUN-2013		SHEET: 1 OF 2

