

=====

= SCHEMATIC DIAGRAMS =

= JOHANNUS =

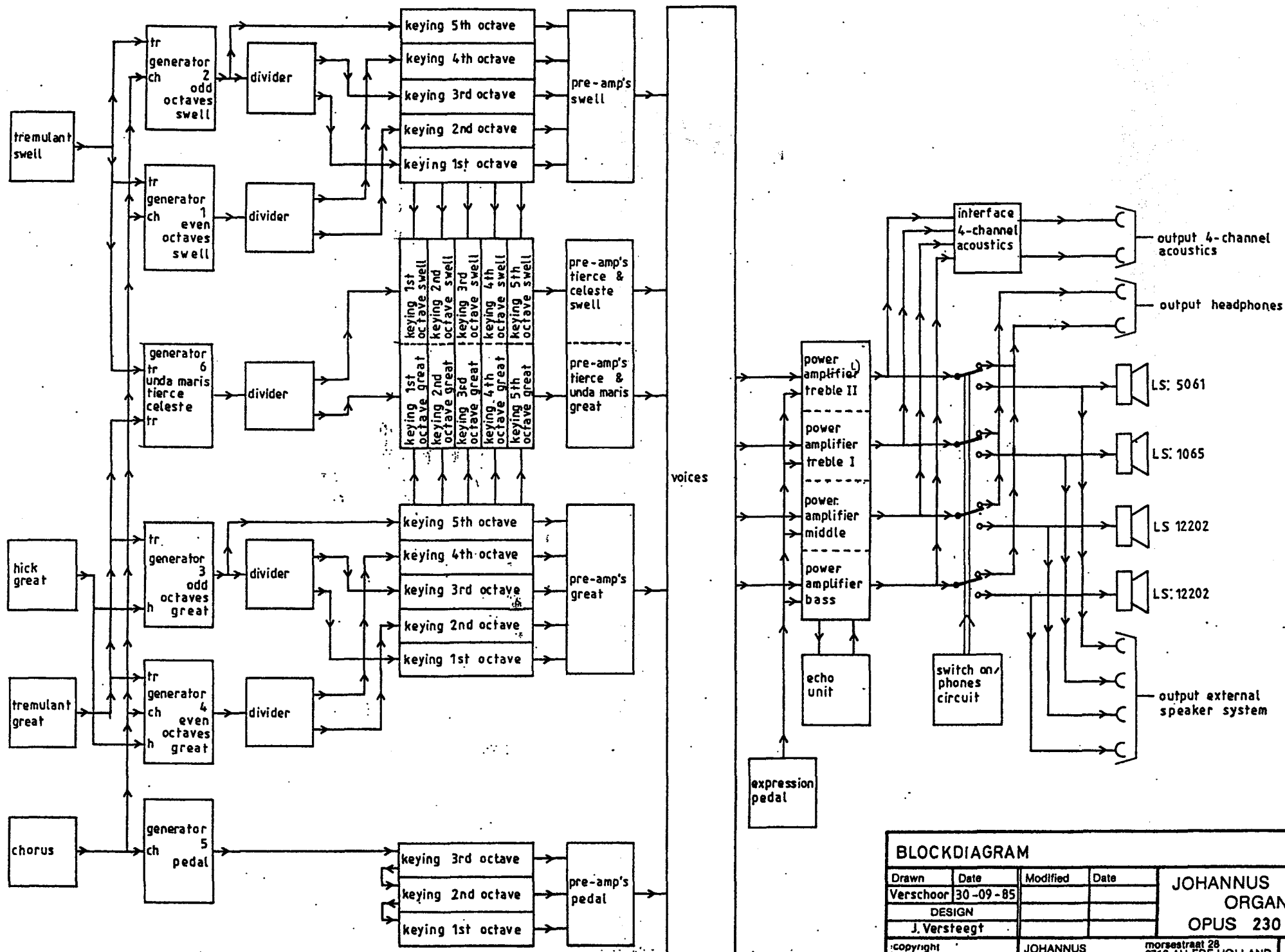
= OPUS 230 =

=====

alterations reserved

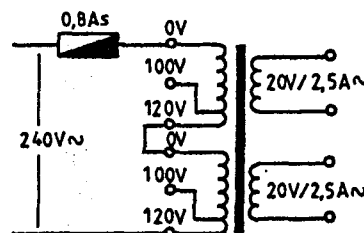
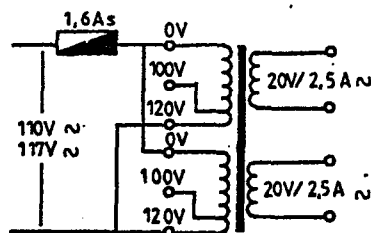
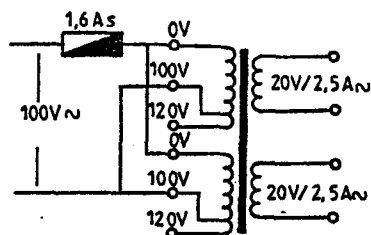
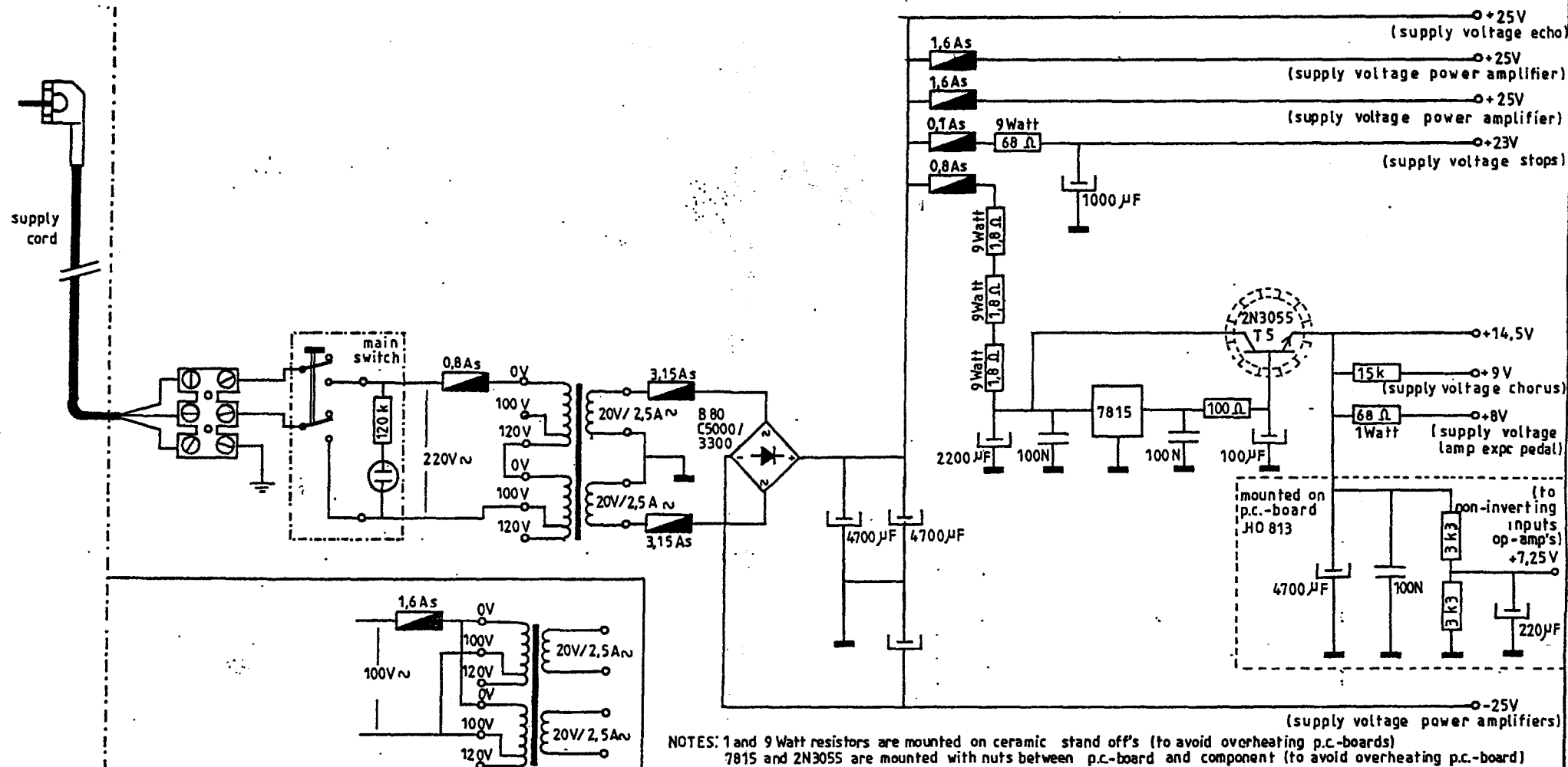
C O N T E N T S

1. BLOCKDIAGRAM
2. POSITIONDIAGRAM (componentside view)
3. POWER SUPPLY
4. ACCESSORIES (tremulant; chorus; hick; presets & couplers)
5. GENERATOR; KEYING & PRE-AMP'S PEDAL
6. GENERATORS & KEYING GREAT
7. PRE-AMP'S GREAT
8. GENERATORS & KEYING SWELL
9. PRE-AMP'S SWELL
10. GENERATOR & KEYING UNDA MARIS; TIERCE; CELESTE
11. PRE-AMP'S UNDA MARIS; TIERCE; CELESTE
12. VOICES PART I
13. VOICES PART II
14. VOICES PART III
15. POWER AMPLIFIERS (BASS & MIDDLE)
16. POWER AMPLIFIERS (TREBLE I & TREBLE II)
17. LOUDSPEAKER-/HEADPHONES-/SWITCH ON-CIRCUIT & INTERFACE 4-CH. ACOUSTICS
18. REVERBERATION UNIT
19. GENERAL INFORMATION SEMI-CONDUCTORS

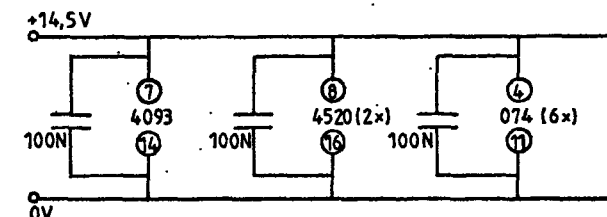


BLOCKDIAGRAM

Drawn	Date	Modified	Date	JOHANNUS ORGAN OPUS 230
Verschoor	30-09-85			
DESIGN				
J. Versteegt				
copyright	JOHANNUS	morsestraat 28		page:
ELECTRONICUM BV	6716 AH EDE HOLLAND			1



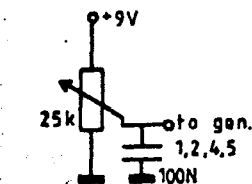
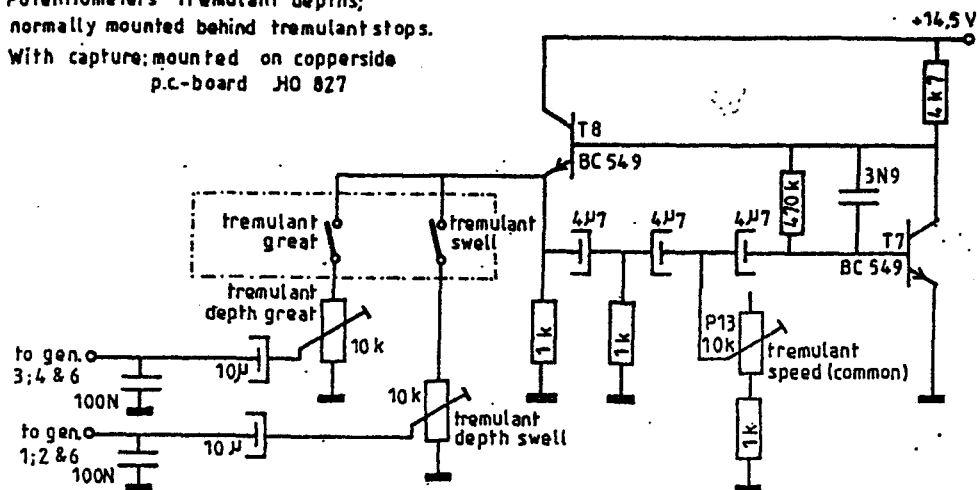
TRANSFORMER CONNECTIONS FOR COUNTRIES WITH OTHER VOLTAGES



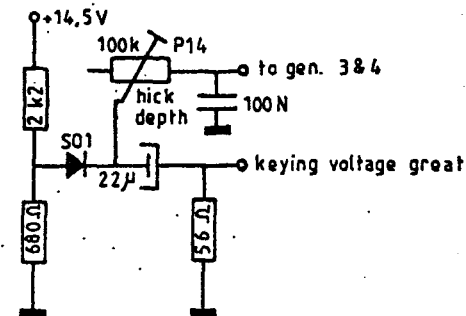
POWER SUPPLY

Drawn	Date	Modified	Date	JOHANNUS ORGAN OPUS 230
Verschoor	01-10 - 85			
DESIGN				
J.Versteegt				
copyright: ELECTRONIUM B.V.	JOHANNUS ORGELBOUW b.v.		morsestraat 28 6718 AH EDE HOLLAND Tel. 08386-37403	page: 3

Potentiometers tremulant depths;
normally mounted behind tremulant stops.
With capture; mounted on copperside
p.c.-board HO 827

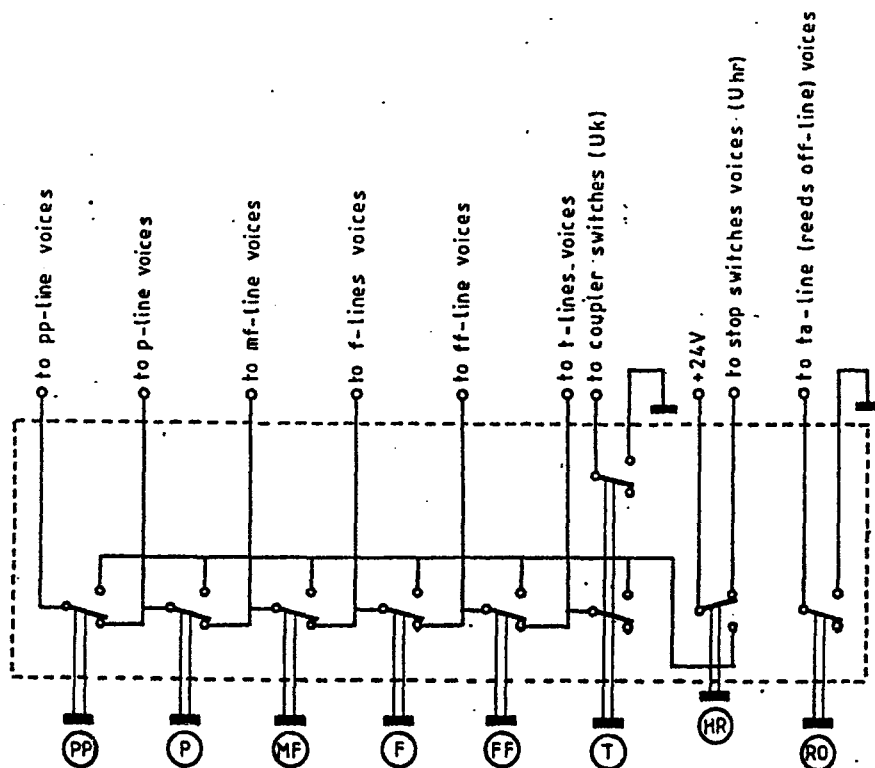


CHORUS (mounted next to the keyboard)



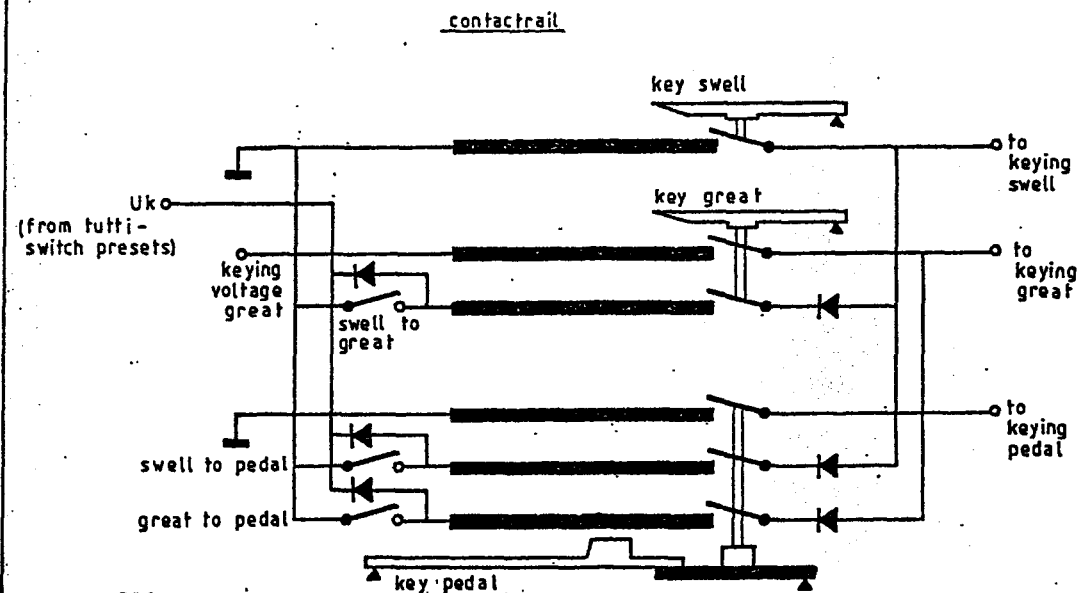
HICK CIRCUIT

PRESET SWITCH SECTION (mounted under keyboard great)



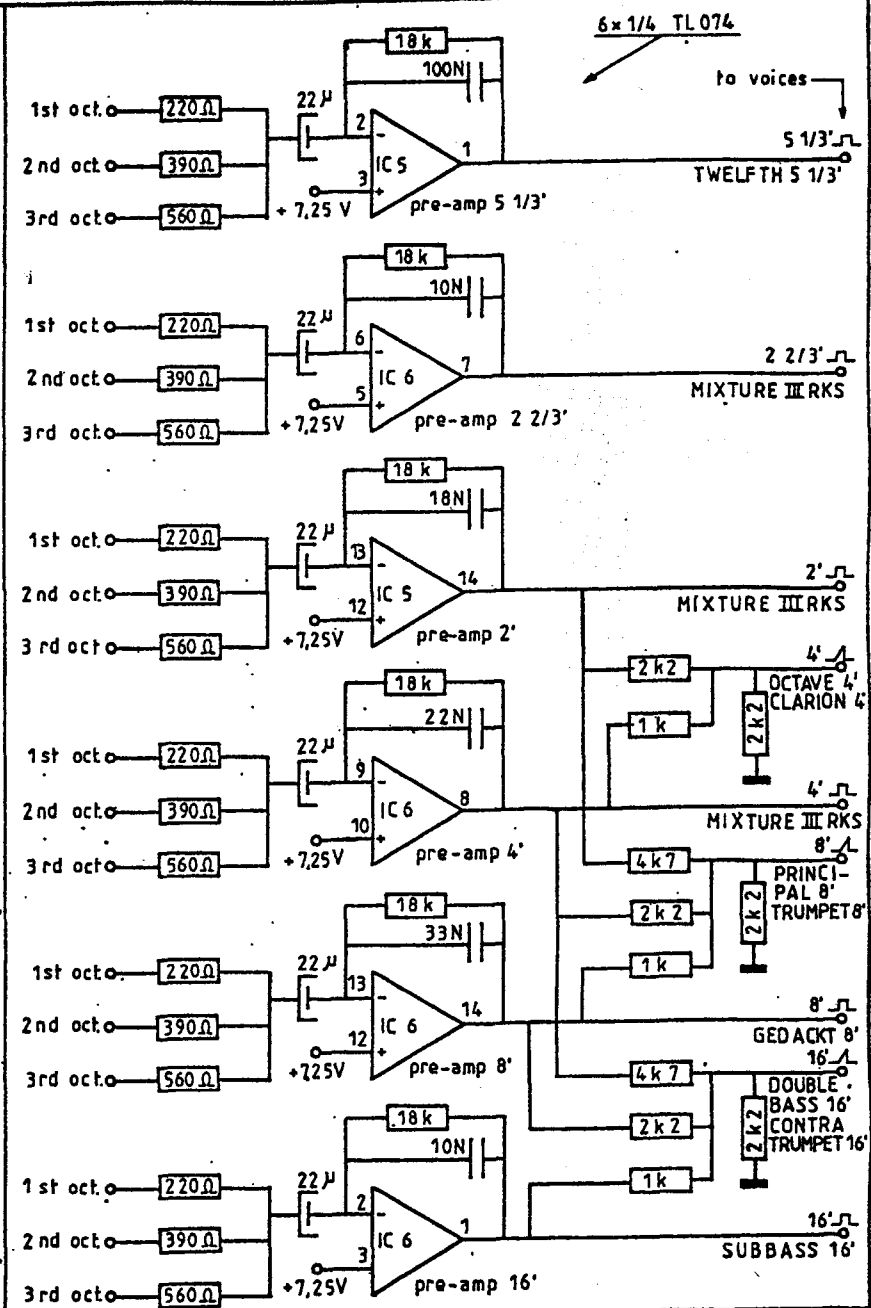
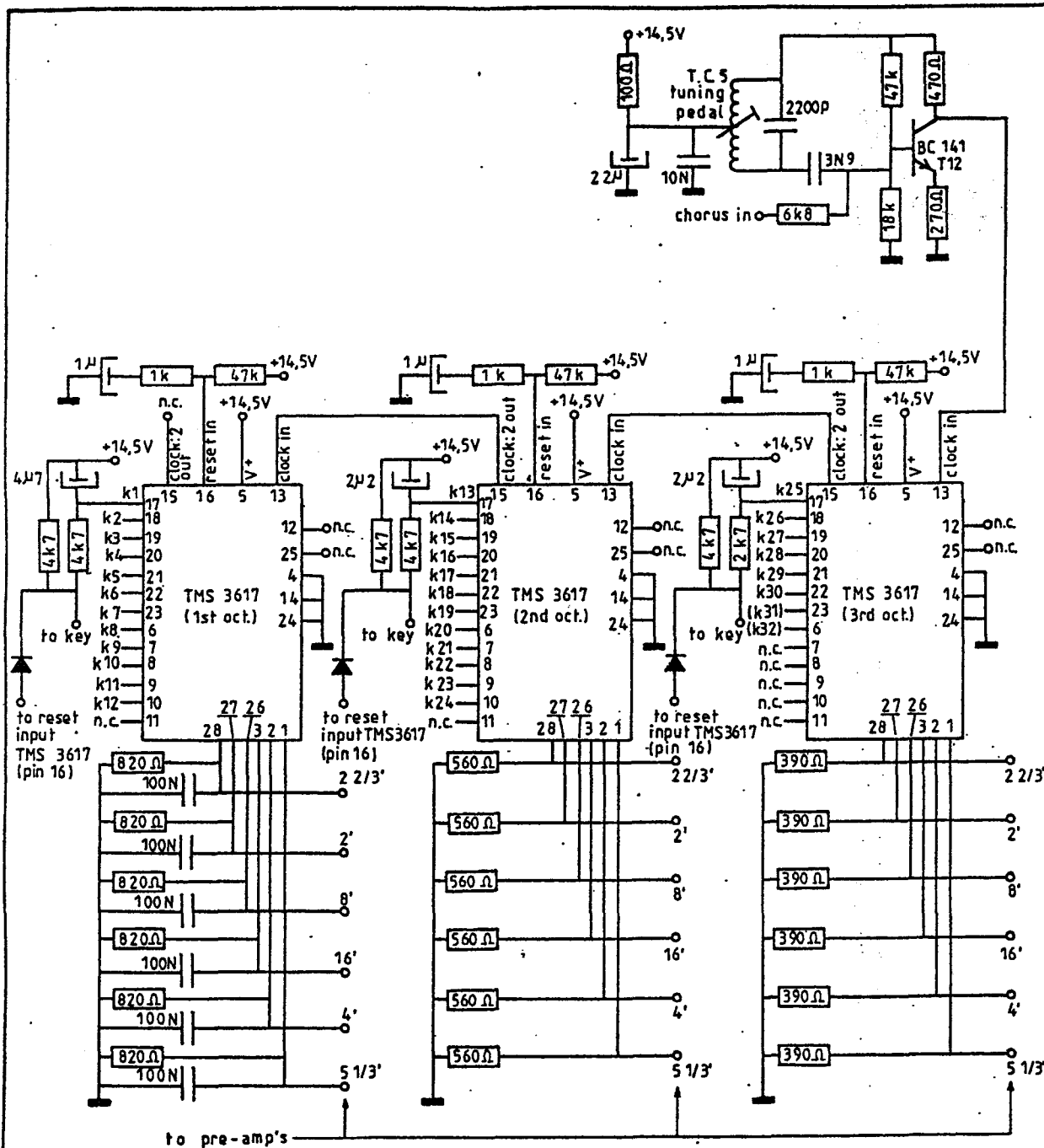
PP.....HR: interlocked

COUPLER SYSTEM



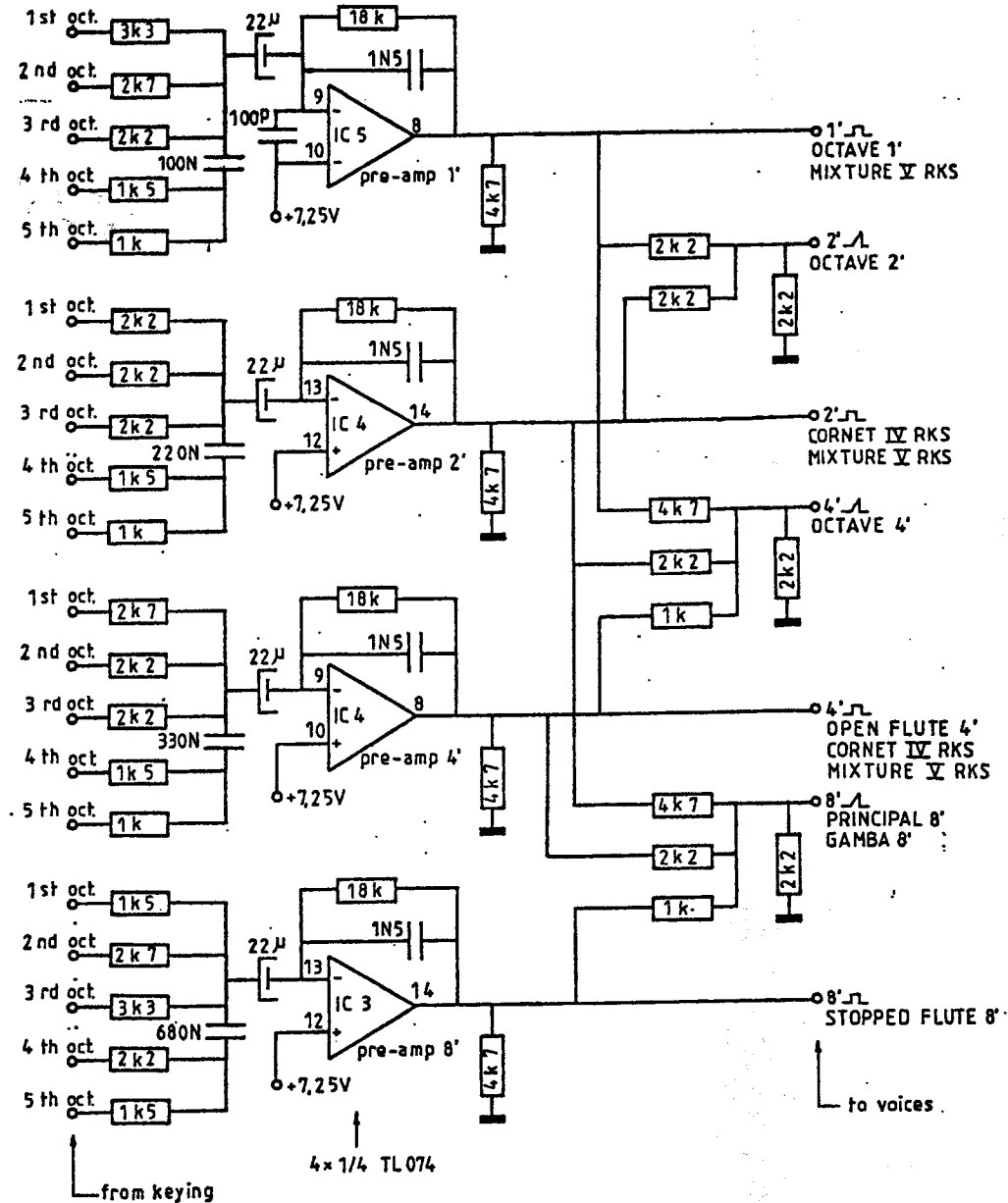
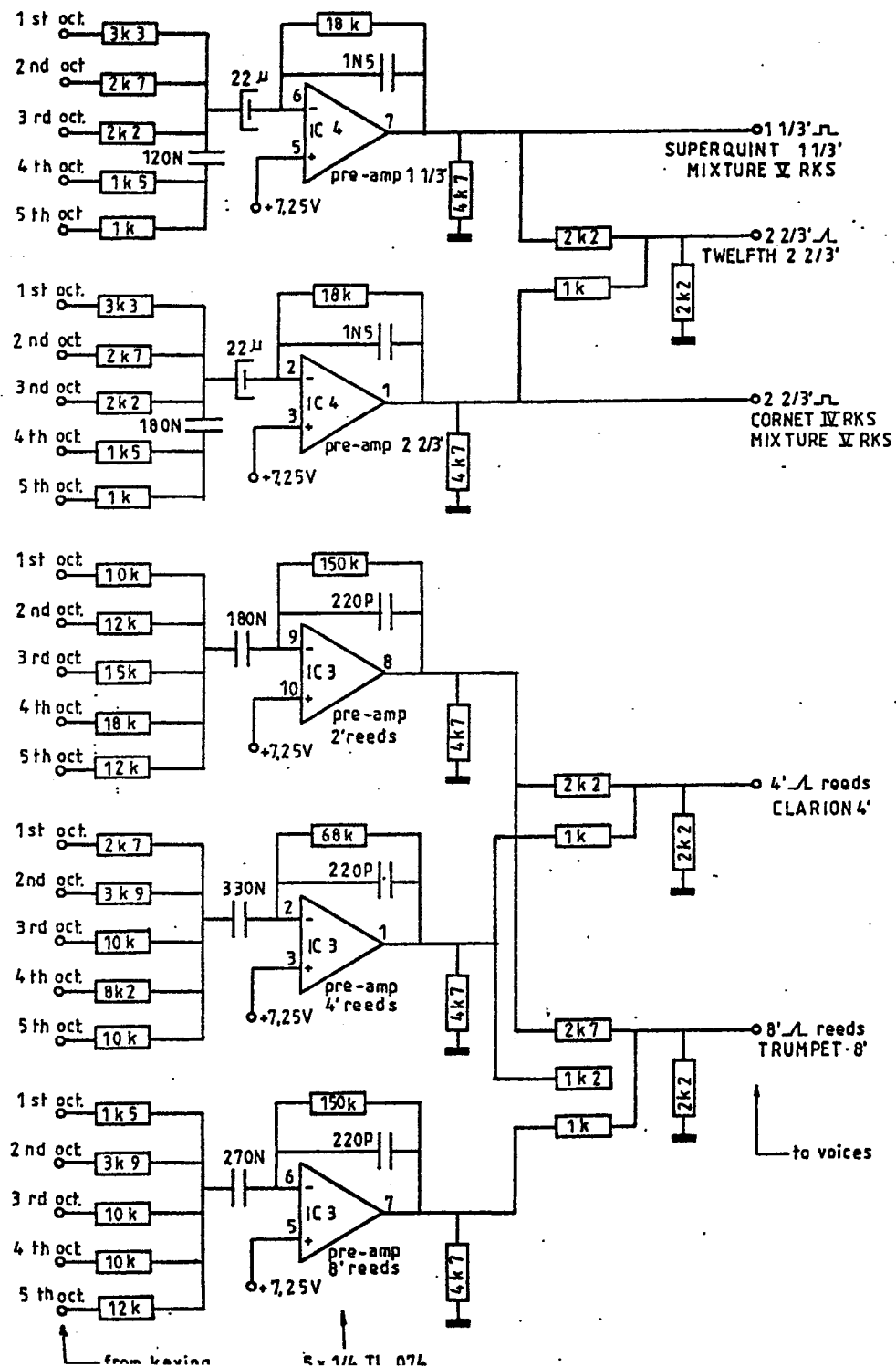
all diodes: S01

ACCESSORIES (tremulant; chorus; hick; presets & couplers)				JOHANNUS ORGAN OPUS 230	
Drawn	Date	Modified	Date		
Verschoor	03-06-85				
DESIGN					
J. Versteeg				JOHANNUS ORGELBOUW b.v. morsestraat 28 8718 AH EDE HOLLAND Tel. 08360-37403	
copyright					
FLICTRONIUM B.V.				page:	4



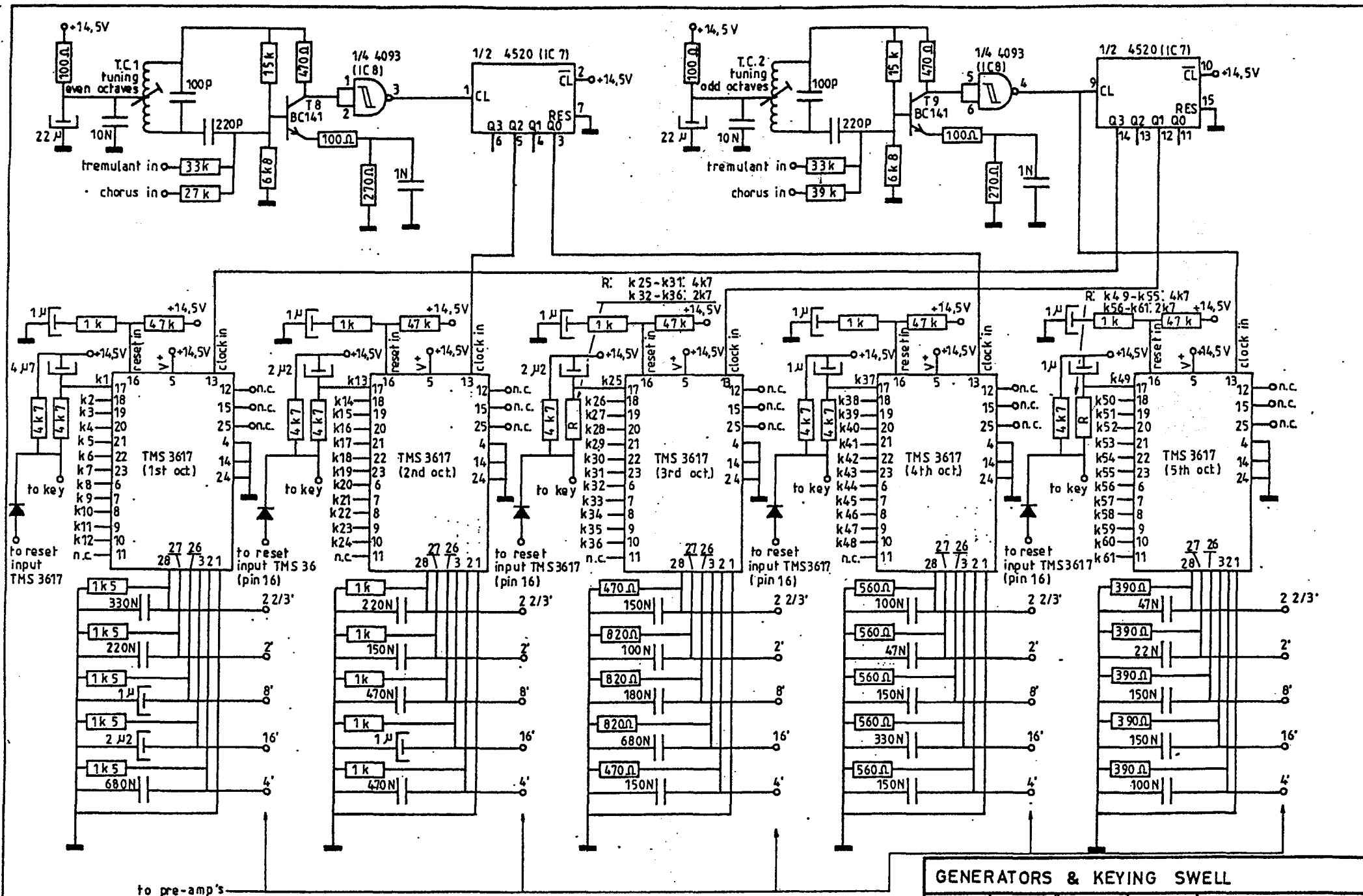
GENERATOR; KEYING & PRE-AMPS PEDAL

Drawn	Date	Modified	Date	JOHANNUS ORGAN OPUS 230
Verschoor	05-06-85			
DESIGN				
J. Versteeg				
copyright:	JOHANNUS			page:
ELECTRONIUM B.V.	ORGELBOUW b.v.			
morsestraat 28 6716 AH EDE HOLLAND Tel. 08380-37403				5



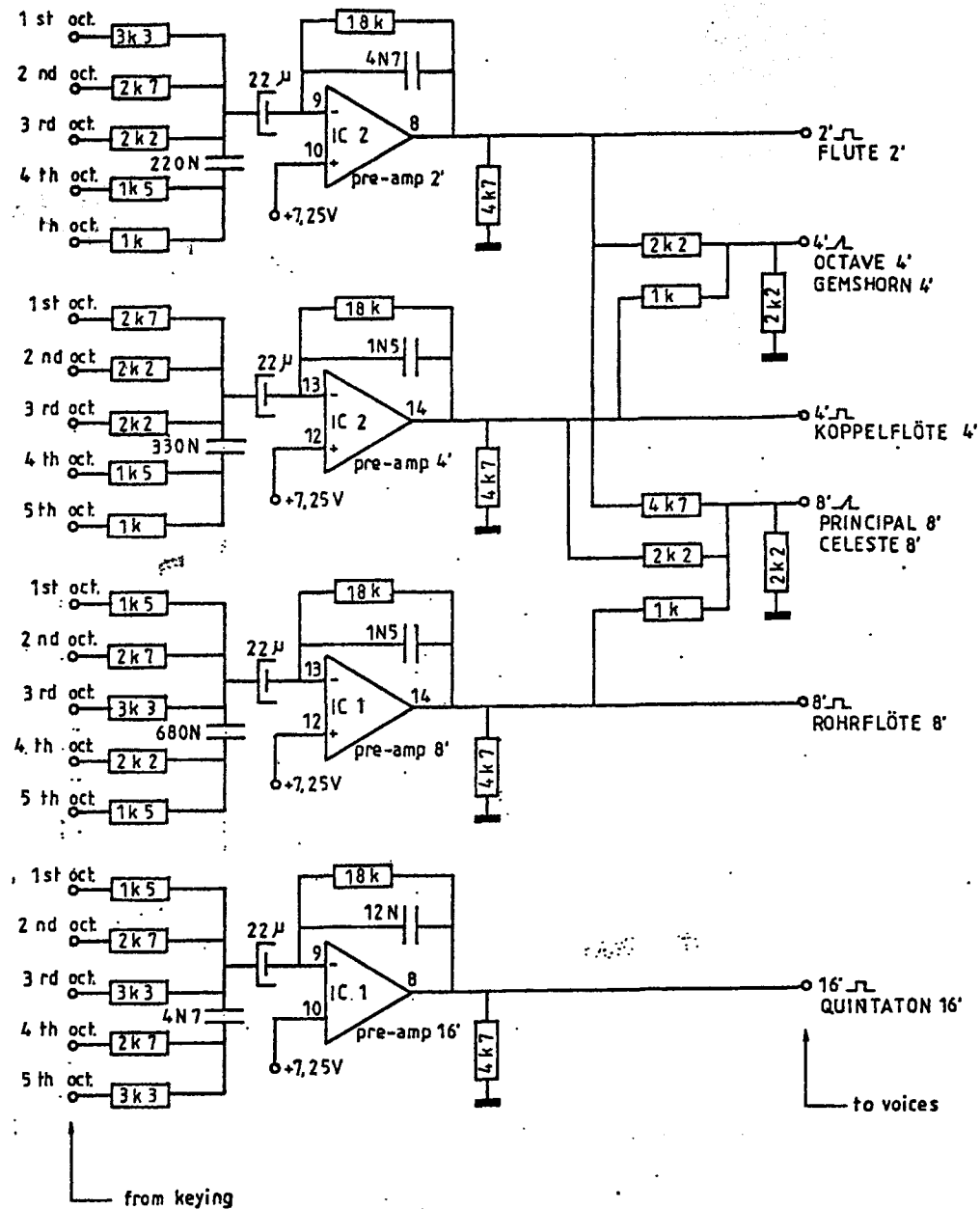
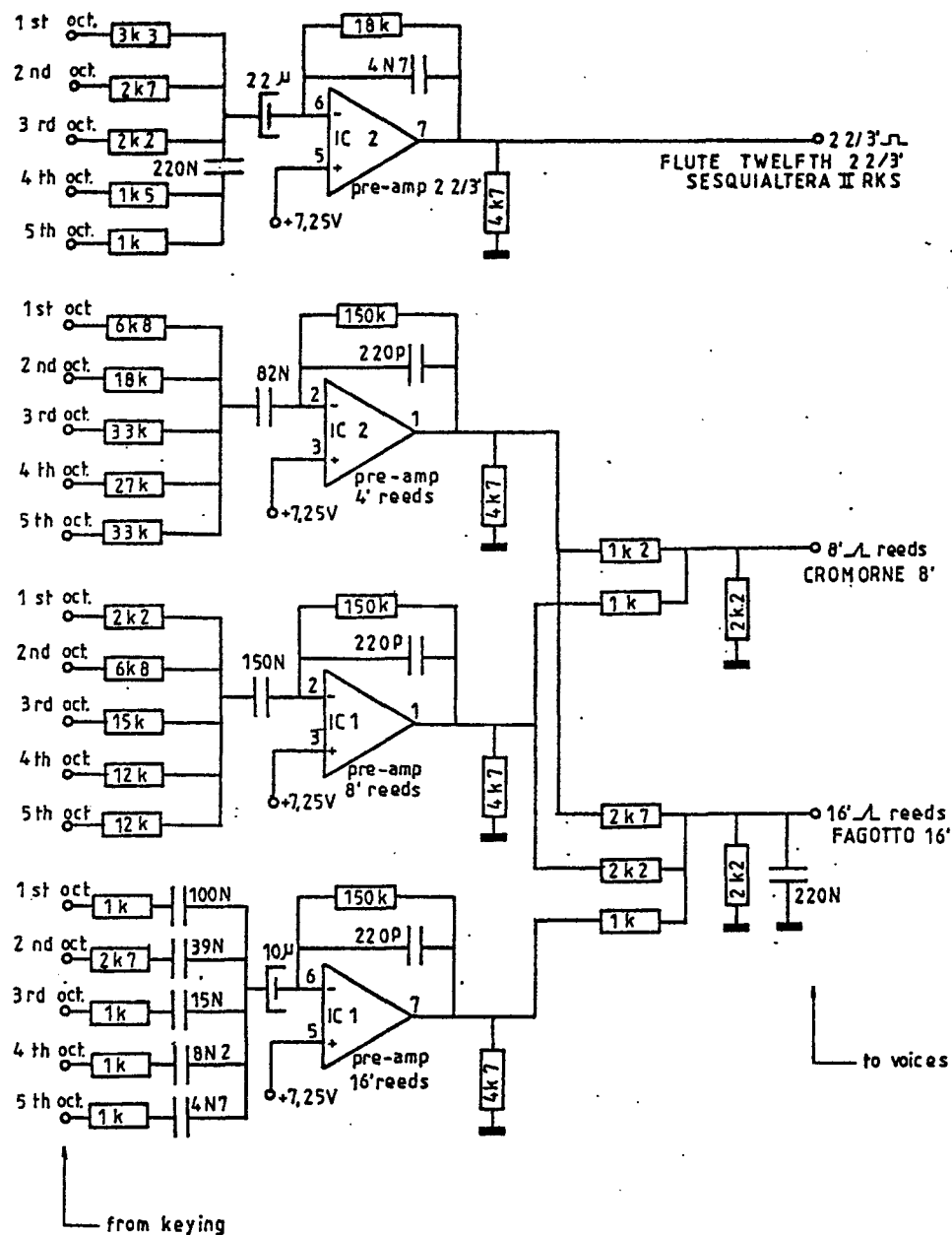
PRE AMP'S GREAT

Drawn	Date	Modified	Date	JOHANNUS ORGAN OPUS 230
Verschuur	06-06-85			
DESIGN				
J. Versfeegt				
copyright. ELECTRONIUM B.V.	JOHANNUS ORGELBOUW B.V.	morsestraat 28 6716 AH EDE HOLLAND Tel. 08380-37403		page: 7



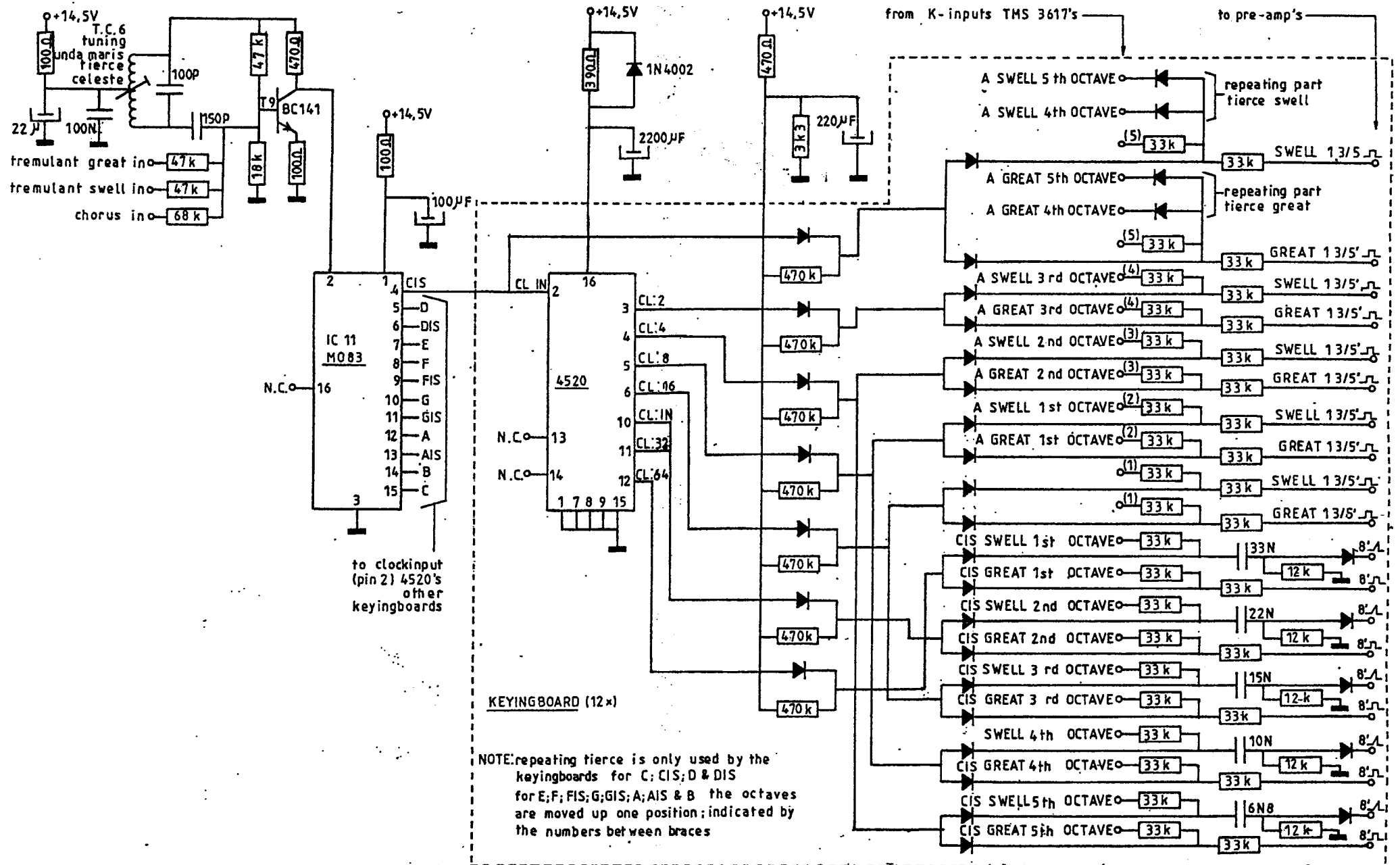
GENERATORS & KEYING SWELL

Drawn	Date	Modified	Date	JOHANNUS ORGAN OPUS 230
Verschuur	05-06-85			
DESIGN				
J. Versteeg				
copyright	JOHANNUS ELECTRONIUM B.V.	ORGELBOUW b.v.	morsestraat 28 6716 AH EDE HOLLAND Tel. 08380-37403	page: 8



PRE-AMP'S SWELL

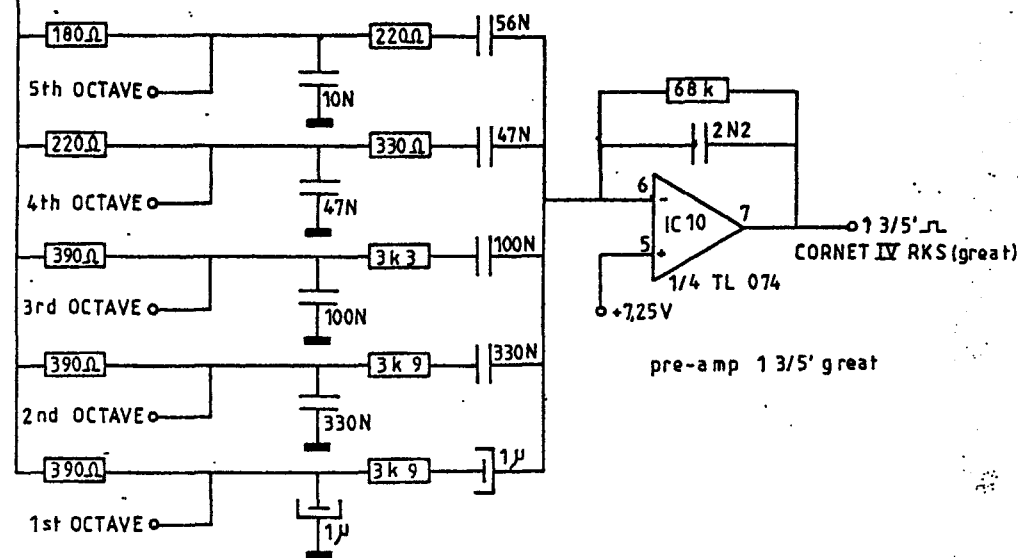
Drawn	Date	Modified	Date	JOHANNUS ORGAN OPUS 230	
Verschoor	06-06-85				
DESIGN					
J. Verssteegt					
copyright:	JOHANNUS			morsestraat 28	page: 9
ELECTRONIUM B.V.	ORGELBOUW b.v.			6716 AH EDE HOLLAND Tel. 08380-37403	



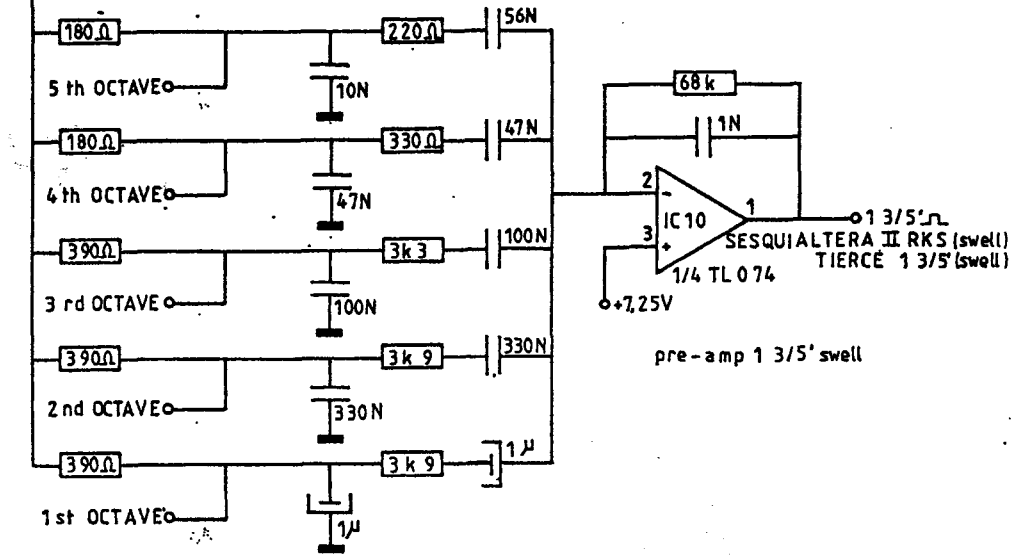
GENERATOR & KEYING UNDA MARIS; TIERCE; CELESTE

Drawn	Date	Modified	Date	JOHANNUS ORGAN OPUS 230
Verschoor	03-10-85			
DESIGN				
J. Versteeg				
copyright ELECTRONIUM B.V.	JOHANNUS ORGAN B.V.	morsestraat 28 6716 AH EDE HOLLAND		page: 10

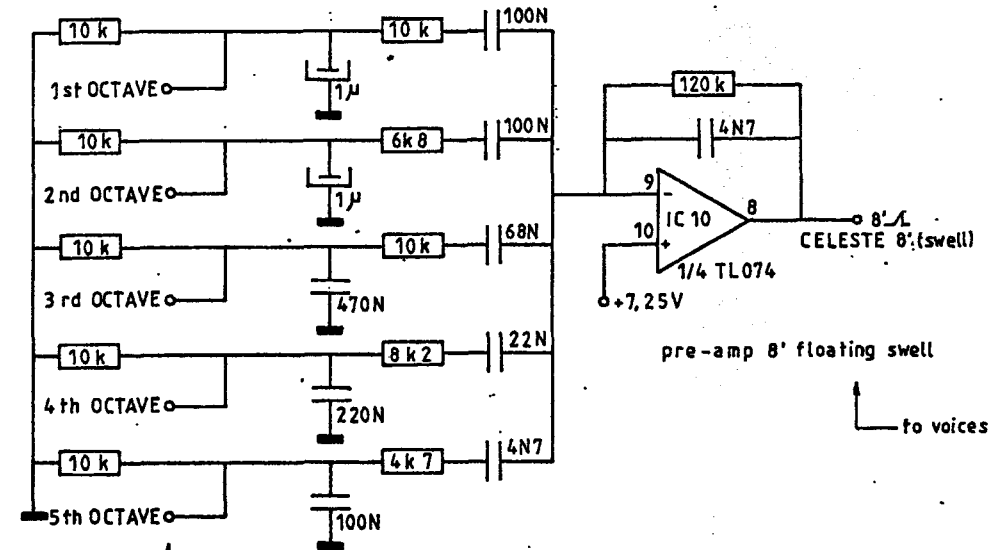
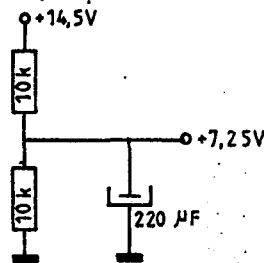
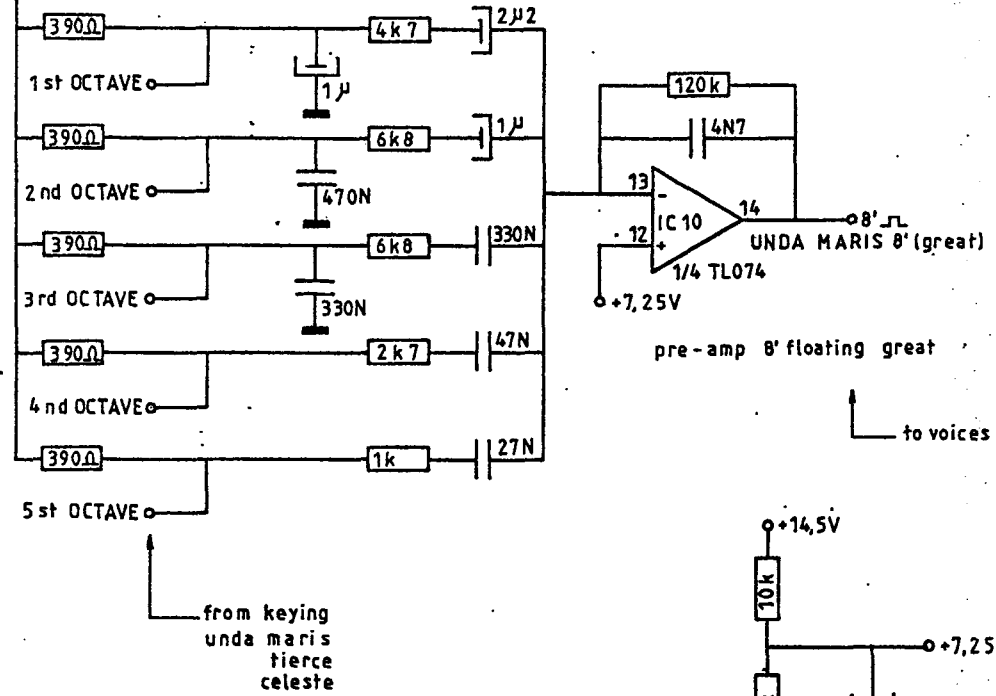
+13,8V (= SUPPLY VOLTAGE 4520's)



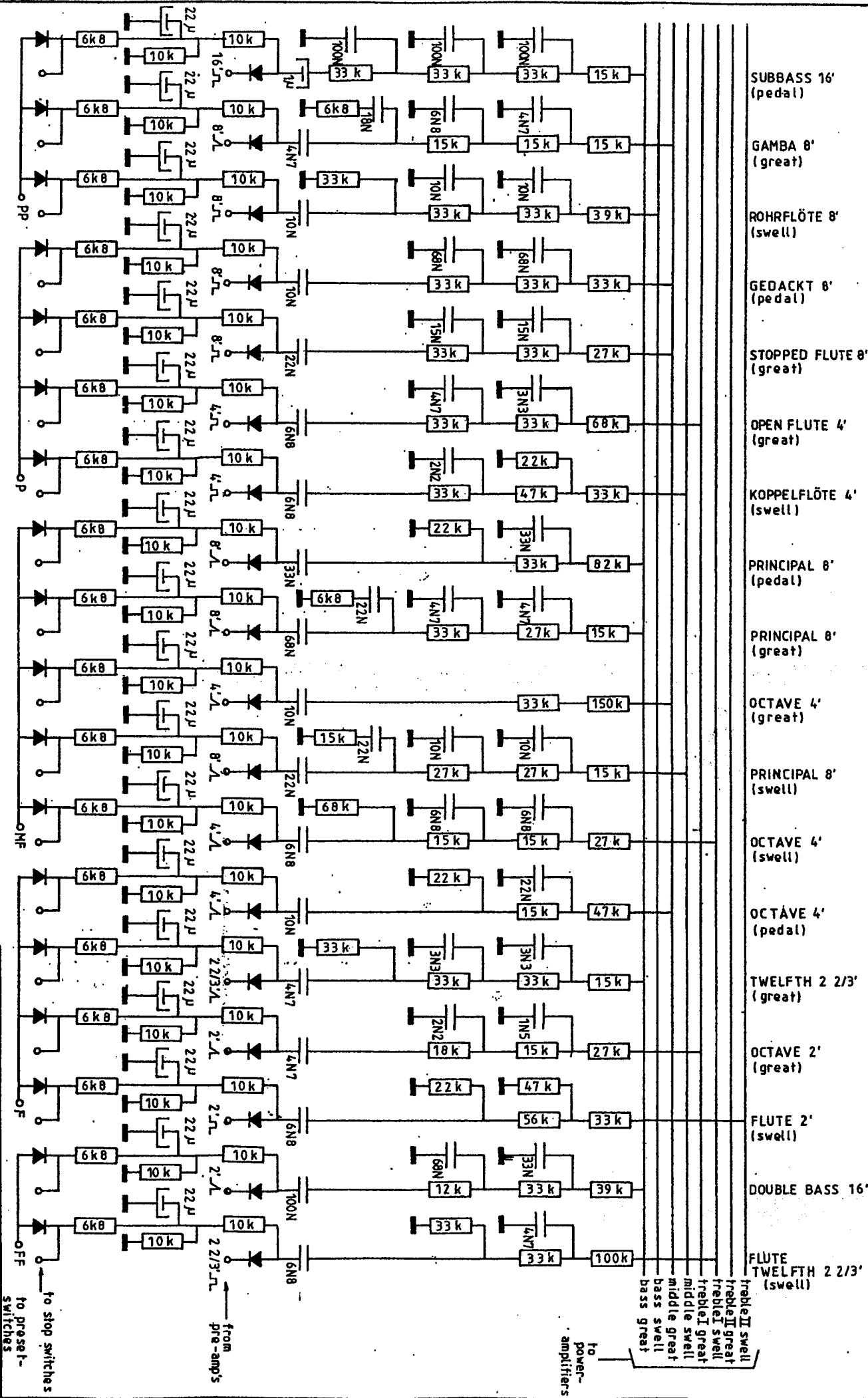
+13,8V (= SUPPLY VOLTAGE 4520's)



+13,8V (= SUPPLY VOLTAGE 4520's)



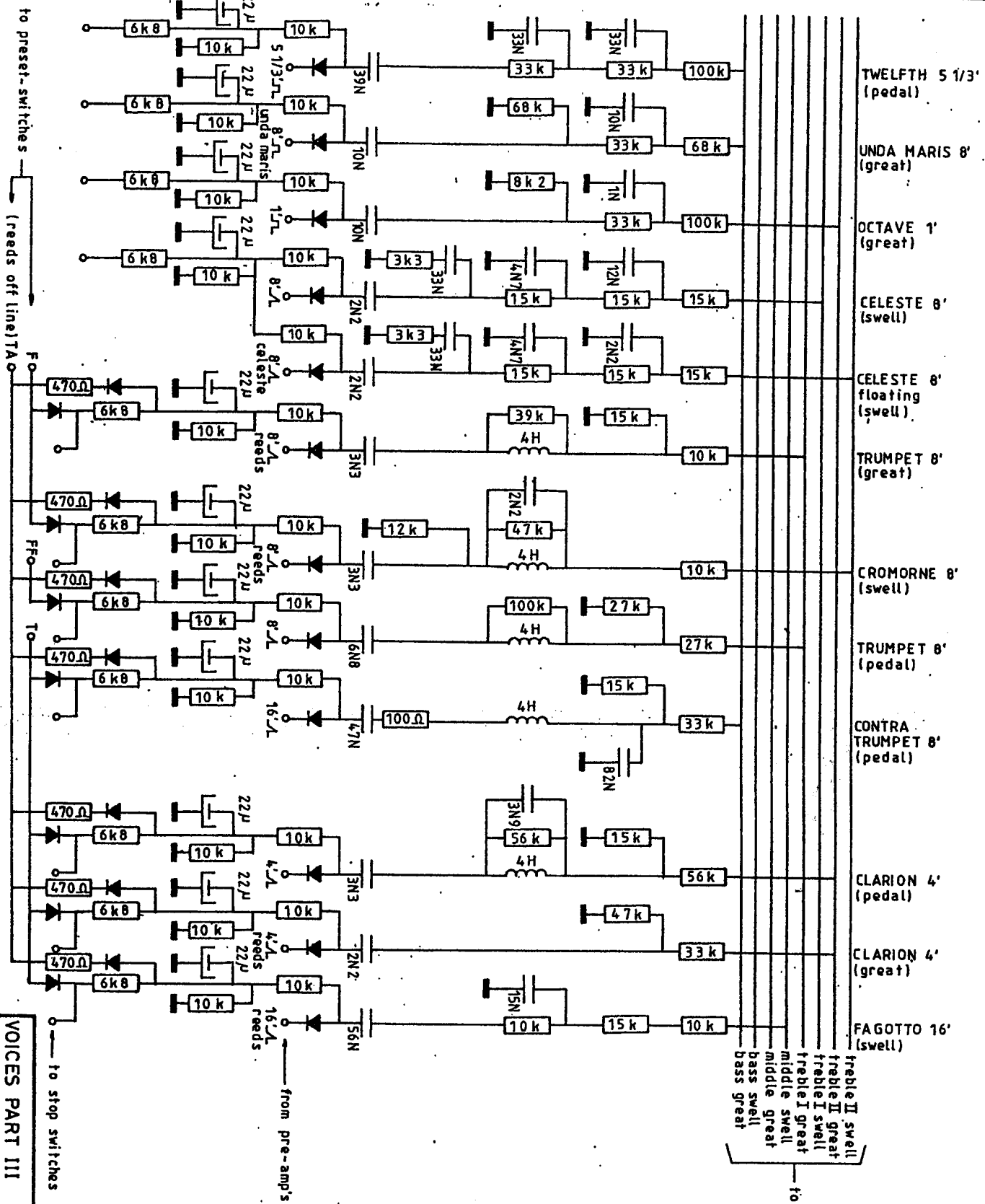
PRE-AMP'S UNDA MARIS; TIERCE; CELESTE				
Drawn	Date	Modified	Date	JOHANNUS ORGAN OPUS 230
Verschoor	03-10-85			
DESIGN				
J. Versteeg t				
copyright:	JOHANNUS			
ELECTRONIUM B.V.	ORGELBOUW b.v.			morsestraat 28 6718 AH EDE HOLLAND Tel. 08380-37403
				page: 11



VOICES PART I

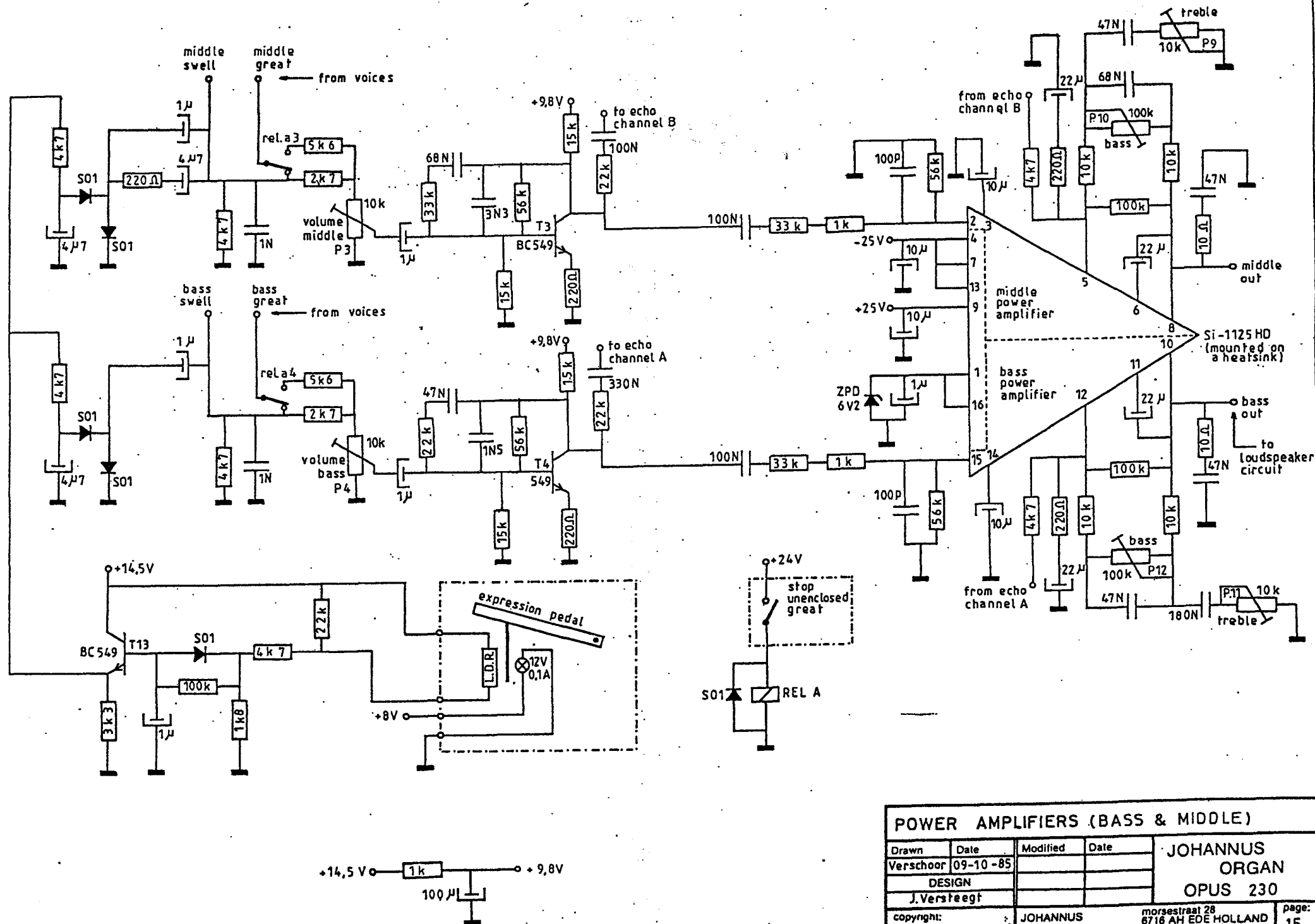
JOHANNUS
ORGAN
OPUS 230

Drawn	Date	Modified	Date
Verchoor 04-10-85			
DESIGN			
J. Versteeg			
Copyright: F. F. Brouwer N.V.			
JOHANNUS			
MOZARTSTRAAT 28			
6718 AH EDE HOLLAND			
page: 17			



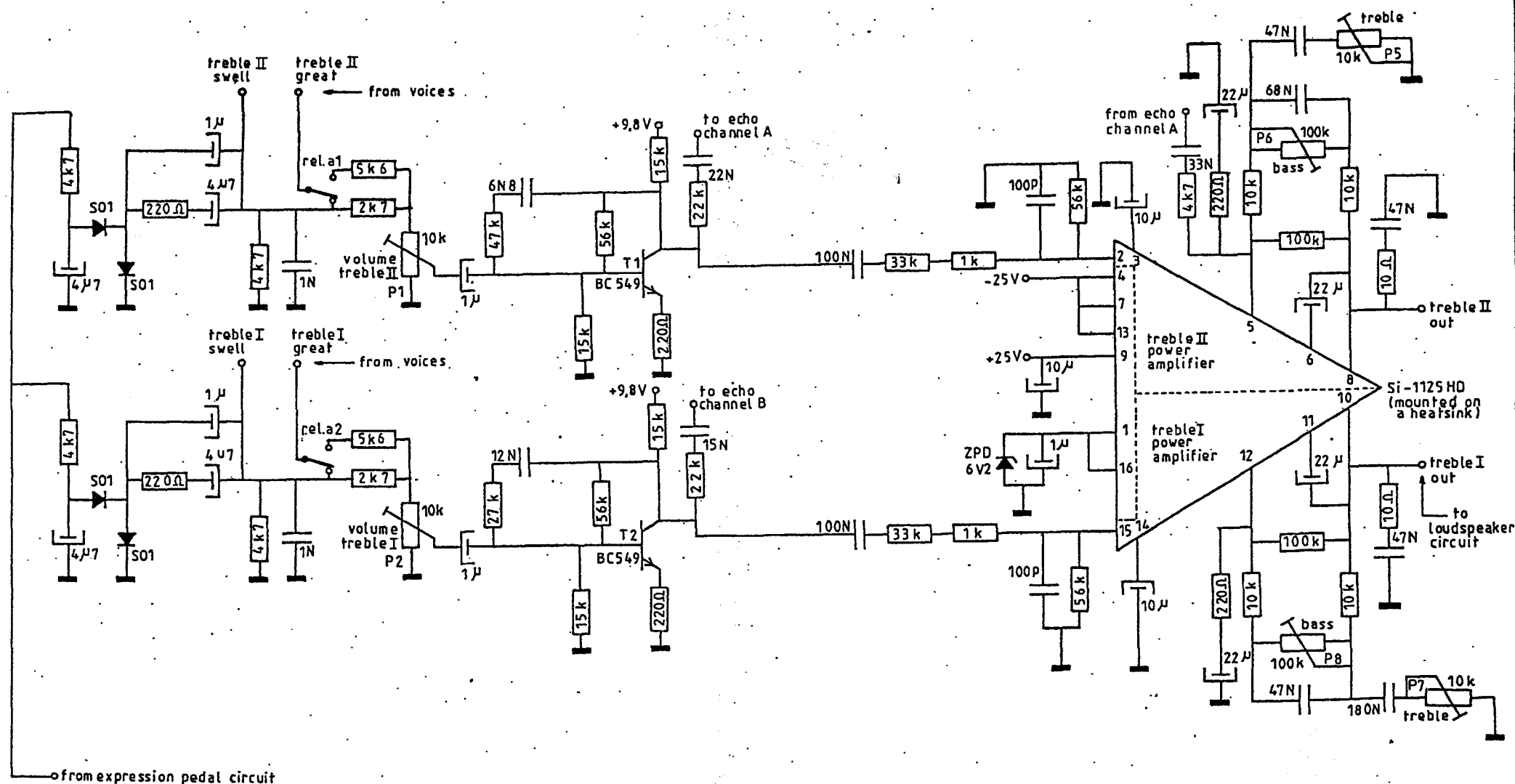
VOICES PART III

Drawn	Date	Modified	Date
Verschuur	07-10-85		
DESIGN			
J. Versteeg			
JOHANNUS			
OPUS 230			
copyright: 6716 AH EDE HOLLAND			
page: 4			



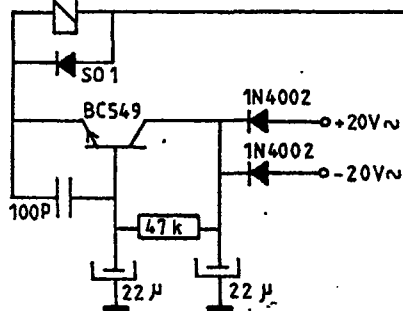
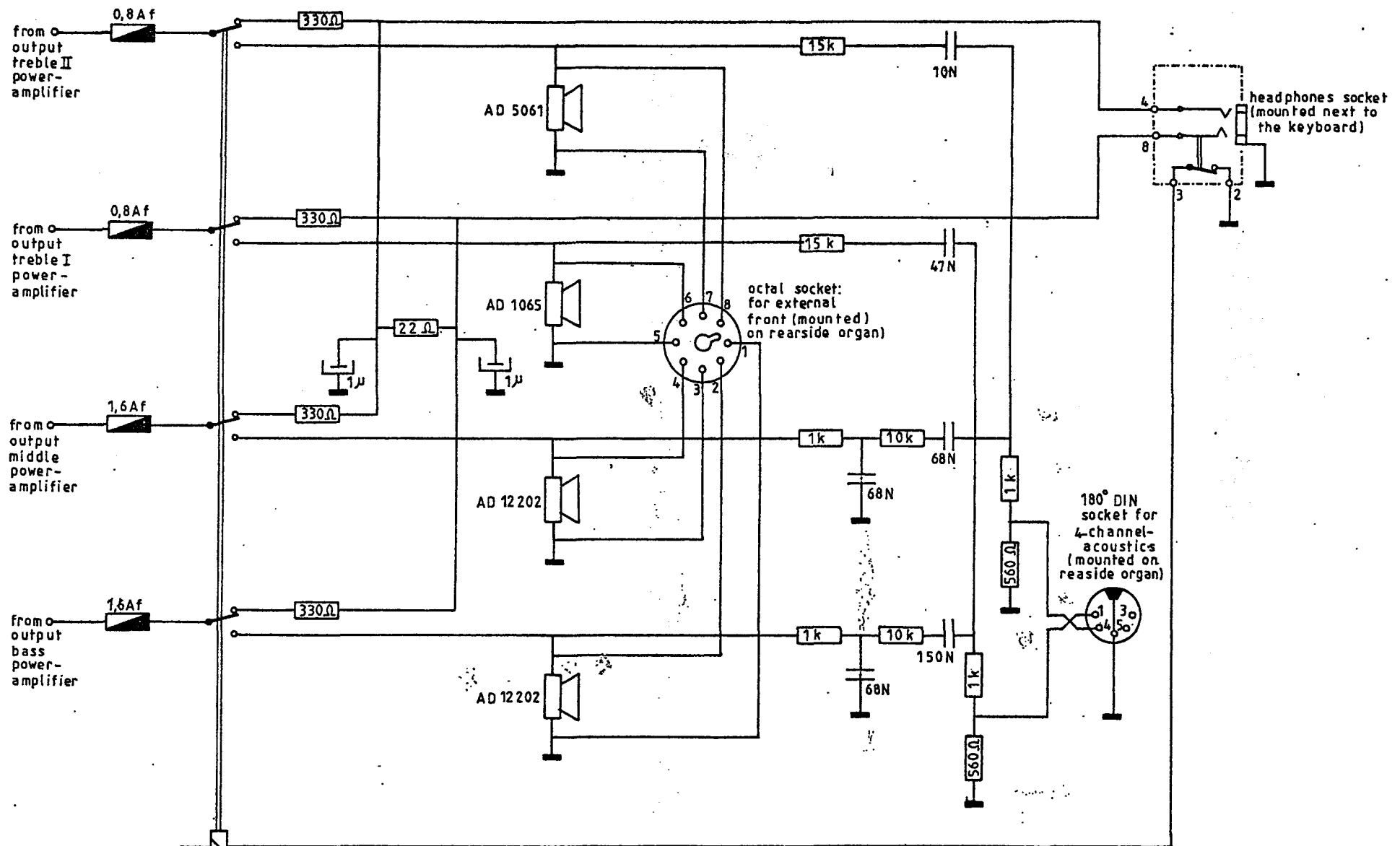
POWER AMPLIFIERS (BASS & MIDDLE)

Drawn	Date	Modified	Date	JOHANNUS ORGAN OPUS 230
Verschoor	09-10-85			
DESIGN				
J. Versteeg				
copyright: ELECTRONIUM B.V.	JOHANNUS ORGELBOUW B.V.	morsestraat 28 6716 AH EDE HOLLAND Tel. 08380-37403		page: 15



POWER AMPLIFIERS (TREBLE I & TREBLE II)

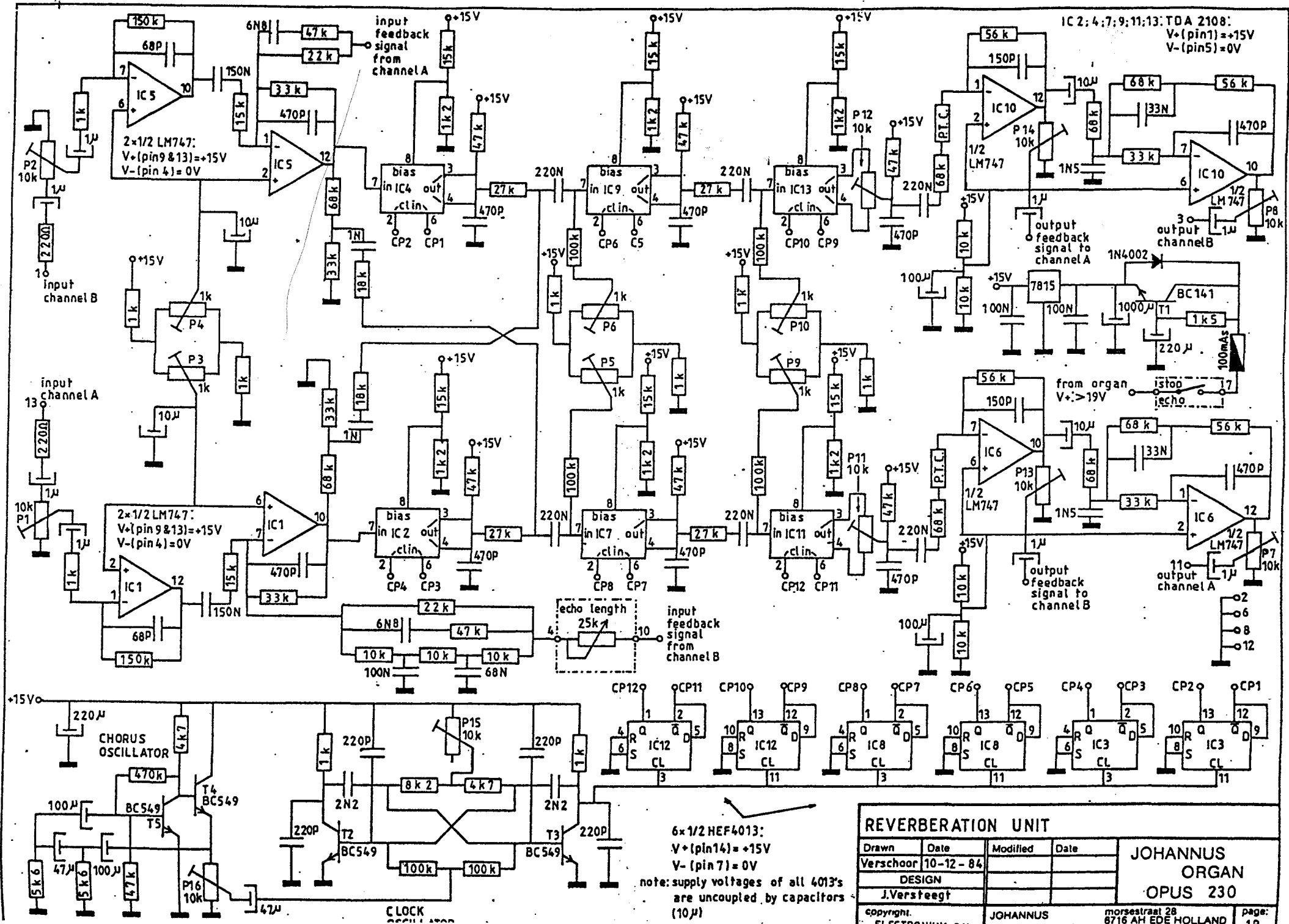
Drawn	Date	Modified	Date	JOHANNUS ORGAN OPUS 230
Verschoor	09-10-85			
DESIGN				
J. Versteegt				
copyright. ELECTRONIUM B.V.	JOHANNUS ORGELBOUW b.v. morsestraat 28 6716 AH EDE HOLLAND Tel. 08380-37403			page: 16

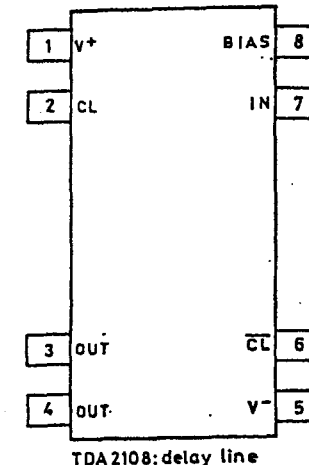
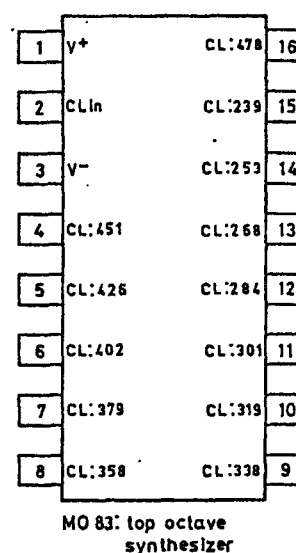
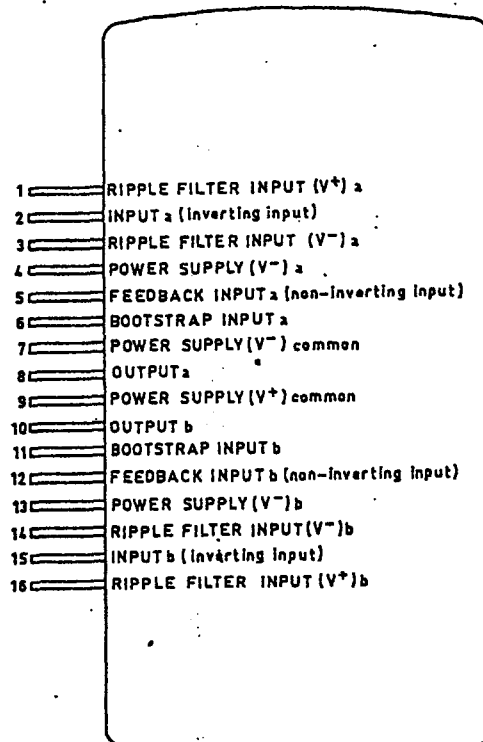
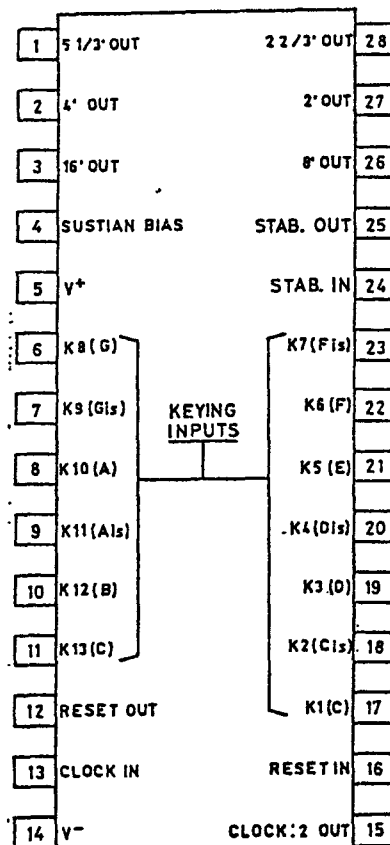
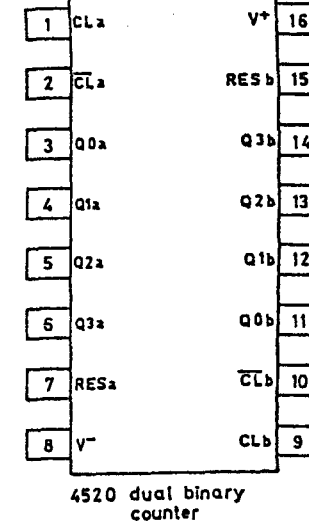
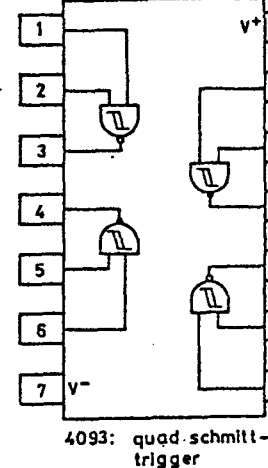
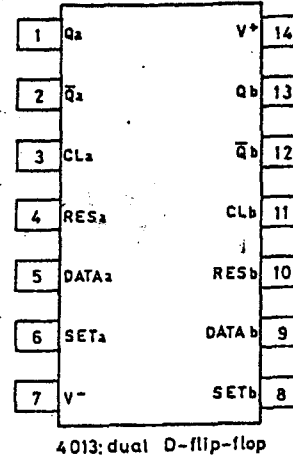
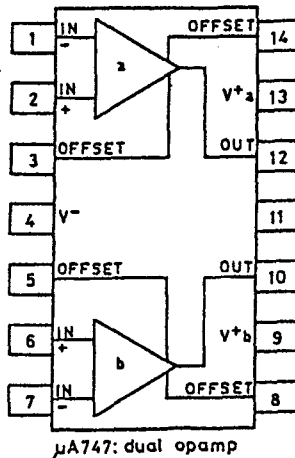
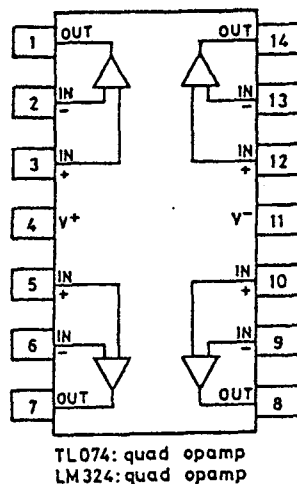
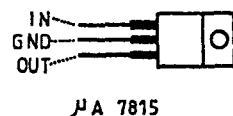
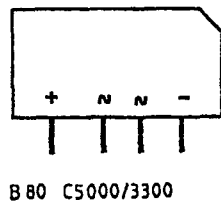
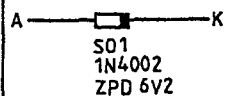
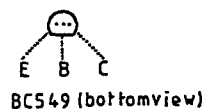
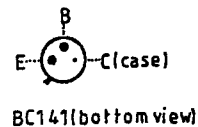
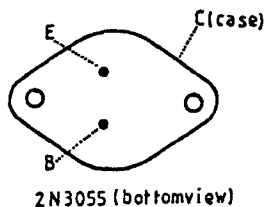


LOUDSPEAKER -/HEADPHONES -/SWITCH ON-

CIRCUIT & INTERFACE 4-CH. ACOUSTICS

Drawn	Date	Modified	Date	JOHANNUS ORGAN OPUS 230
Verschoor	09-10-85			
DESIGN				
J.Versteegt				
copyright: ELECTRONIUM B.V.	JOHANNUS ORGELBOUW b.v. morsestraat 28 6716 AH EDE HOLLAND Tel. 08380-37403			page: 17





GENERAL INFORMATION SEMI-CONDUCTORS					
Drawn	Date	Modified	Date	JOHANNUS ORGAN OPUS 230	
Verschoor	13-06-85				
DESIGN					
J. Verssteegt					
copyright:	JOHANNUS		morsestraat 28		page:
ELECTRONIUM B.V.	ORGELBOUW b.v.		6716 AH EDE HOLLAND		19
			Tel. 08380-37403		