

Med. Swing ♩ = 150

A

Cm7

F7

Bbmaj7

Ebmaj7

Am7(b5)



D7

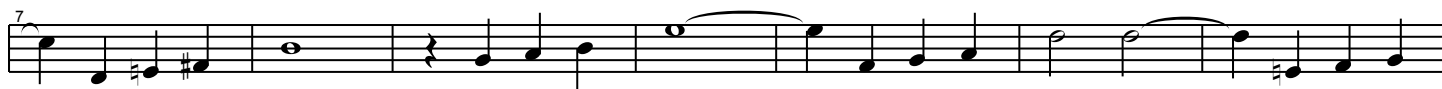
Gm

Cm7

F7

Bbmaj7

Ebmaj7



Am7(b5)

D7

Gm

B

Am7(b5)

D7

Gm



Cm7

F7

Bbmaj7

Ebmaj7

Am7(b5)

D7



Gm

C9

Fm7

Bb7

Ebmaj7

Am7(b5)D7(#5)

Gm

G7

Melody is freely interpreted rhythmically

