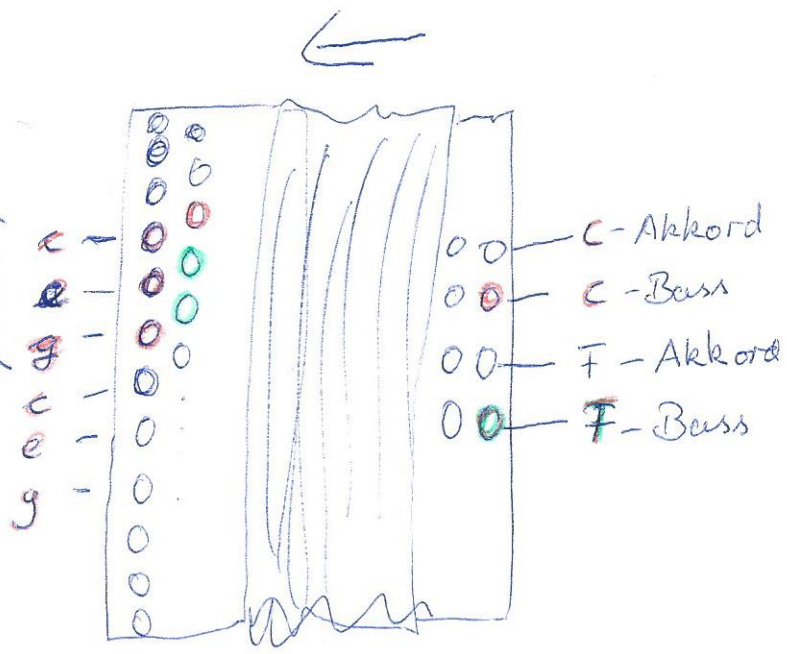
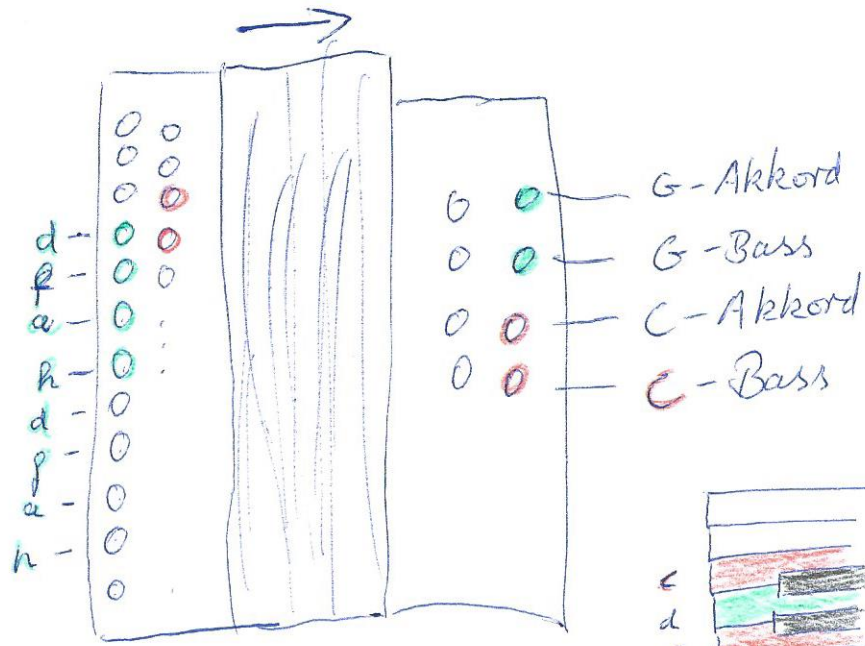


Balgrichtung: Druck

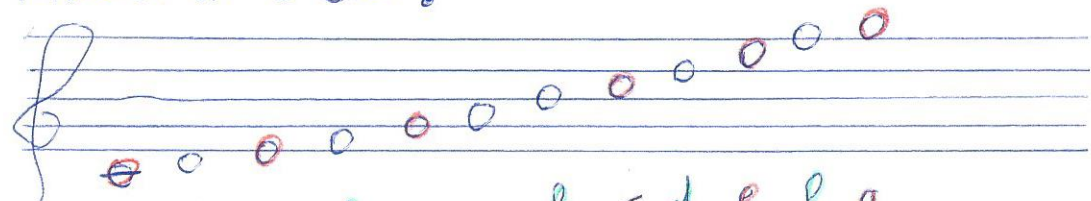
Hauptton = Tonika



Balgrichtung: Zug

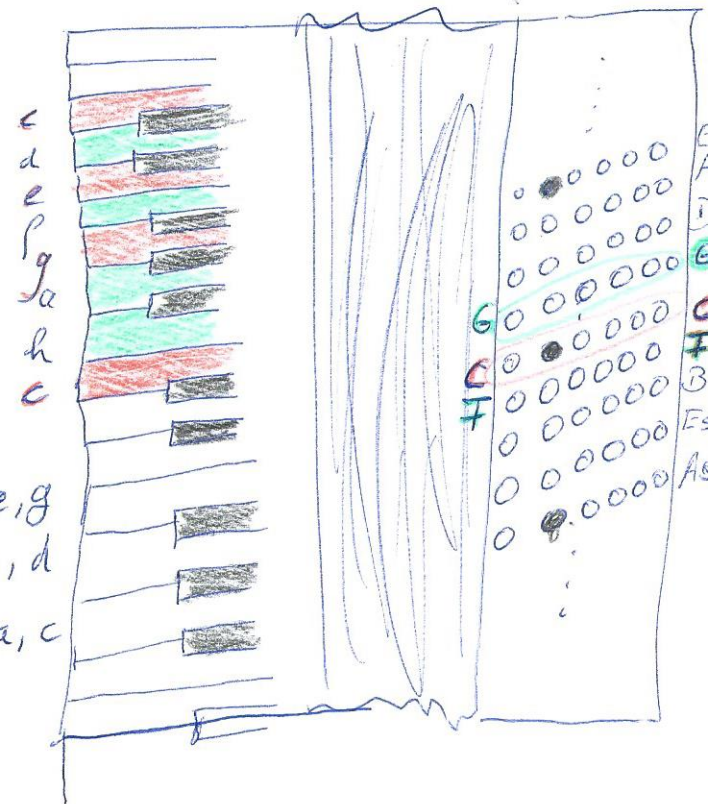


Die Tonleiter in C-Dur:



C-Dur: c d e f g a h c d e f g
 c- 1 2 3 4 5 6 7 8/1 2 3 4 5
 G-Akkord 5 7 2
 F-Akkord 4 6 8/1

= Tonika = 1/3/5 = c, e, g
 = Dominante = 5/7/2 = g, h, d
 = Subdominante = 4/6/1 = f, a, c



Balgrichtung: egal da gleichmäßig!