

Hohner Club Erika (in C/F)

Code: #'Club-Erika-CF
System: Club
Gleichton: c''
Töne 32 (Druck: 22, Zug: 25)
Reihen: 3 (2+1)
Knöpfe: 25 (21+4)
Bässe: 8



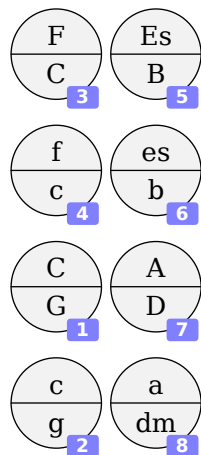
Info

Diskant:

Nummer
(pro Reihe)

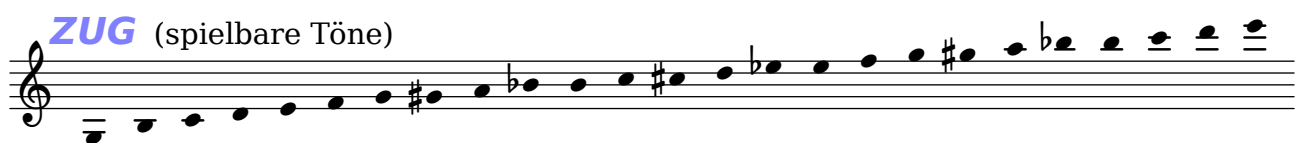
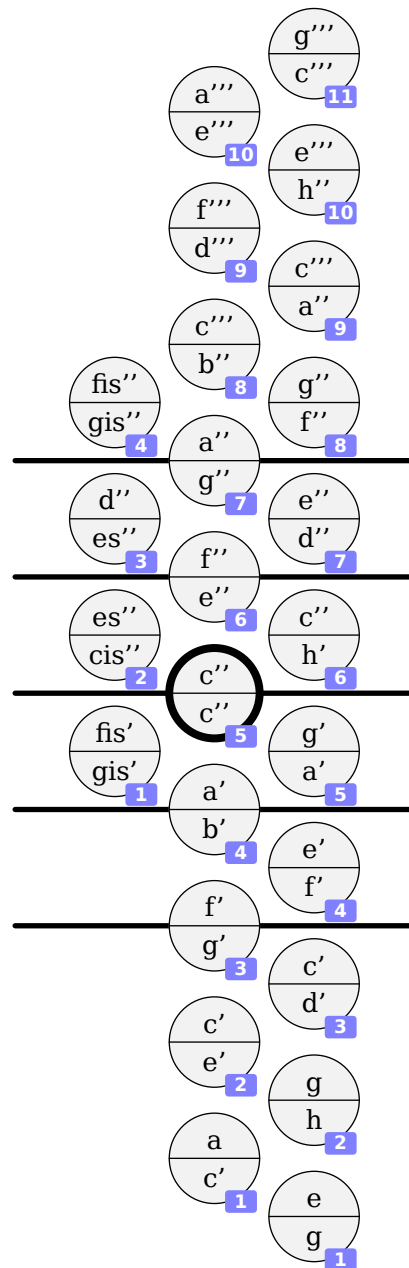
Bässe:

Griffschrift-
Kürzel



UNTEN

OBEN



Hohner Club IIB (in C/F)

Code: #'Club-IIB-CF
System: Club
Gleichton: c''
Töne 40 (Druck: 27, Zug: 30)
Reihen: 3 (2+1)
Knöpfe: 30 (23+7)
Bässe: 8



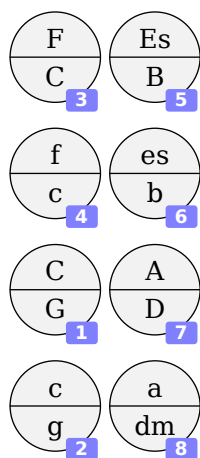
Info

Diskant:

Nummer
(pro Reihe)

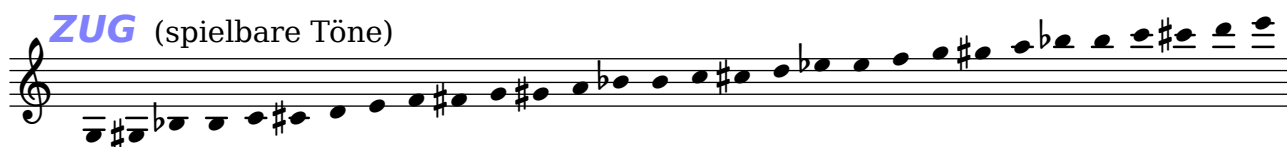
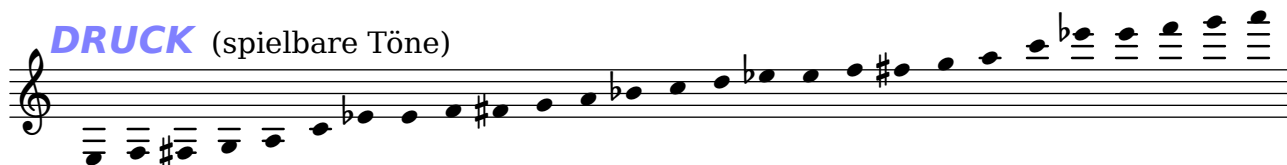
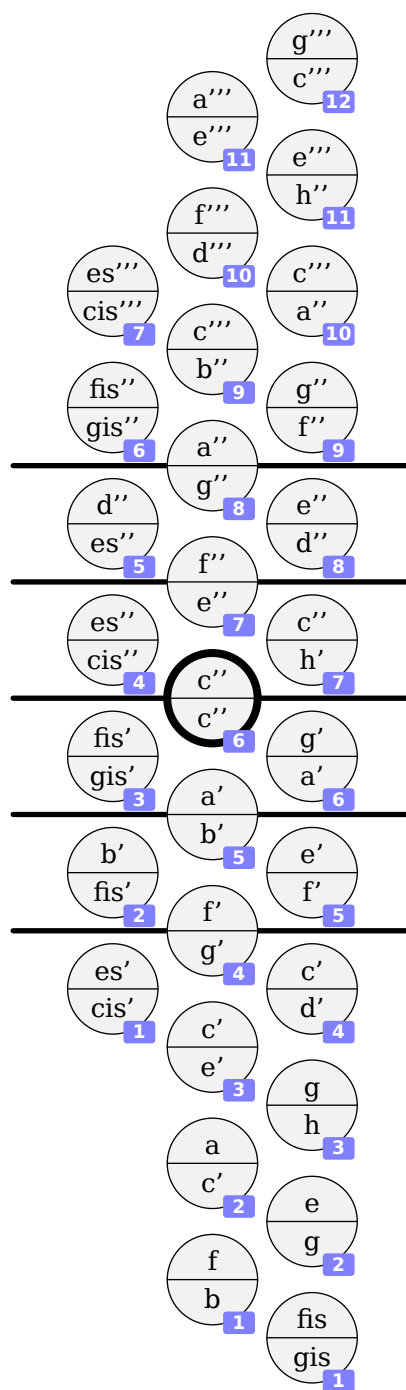
Bässe:

Griffschrift-
Kürzel



UNTEN

OBE



Hohner Club Ouverture (in C/F)

Code: #'Club-Ouverture-CF
System: Club
Gleichton: c''
Töne 40 (Druck: 27, Zug: 30)
Reihen: 3 (2+1)
Knöpfe: 30 (23+7)
Bässe: 10



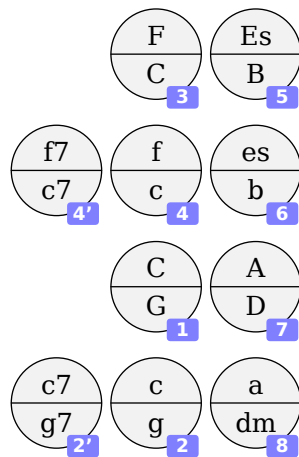
Info

Diskant:

Nummer
(pro Reihe)

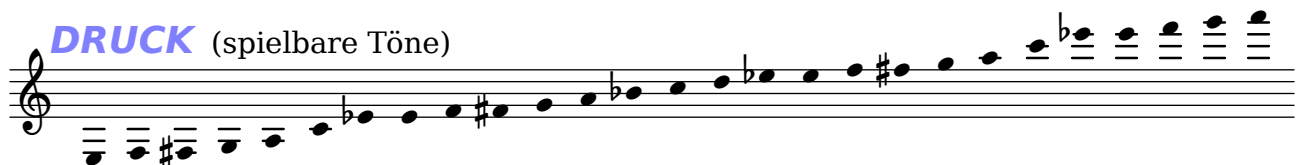
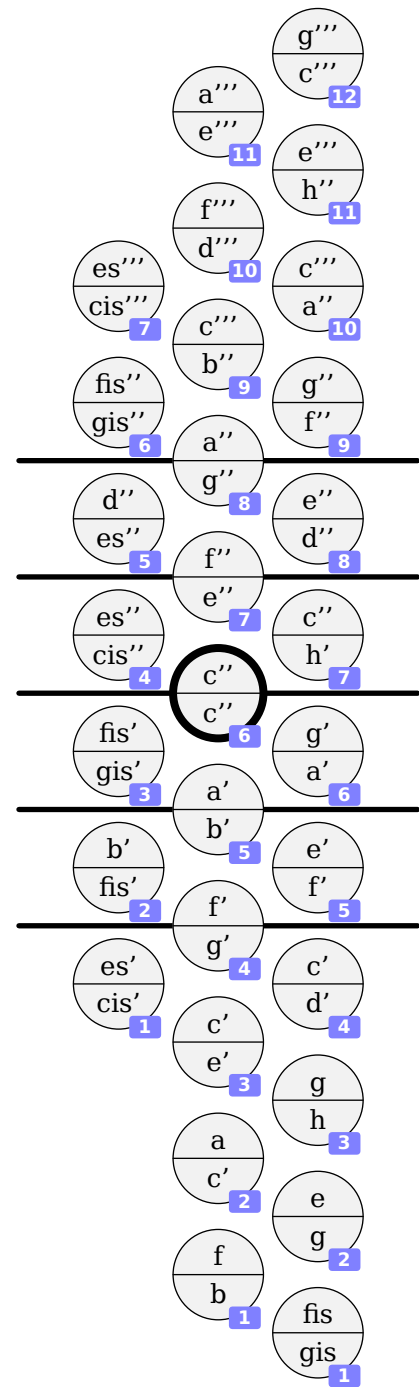
Bässe:

Griffschrift-
Kürzel



UNTEN

O BEN



Hohner Club Ouverture V (in C/F)

Code: #'Club-OuvertureV-CF
System: Club
Gleichton: c''
Töne 40 (Druck: 28, Zug: 31)
Reihen: 3 (2+1)
Knöpfe: 31 (23+8)
Bässe: 8



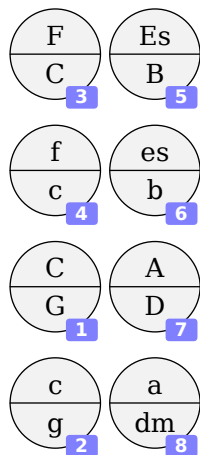
Info

Diskant:

Nummer
(pro Reihe)

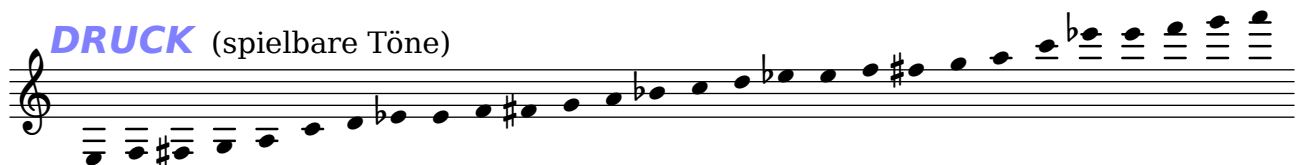
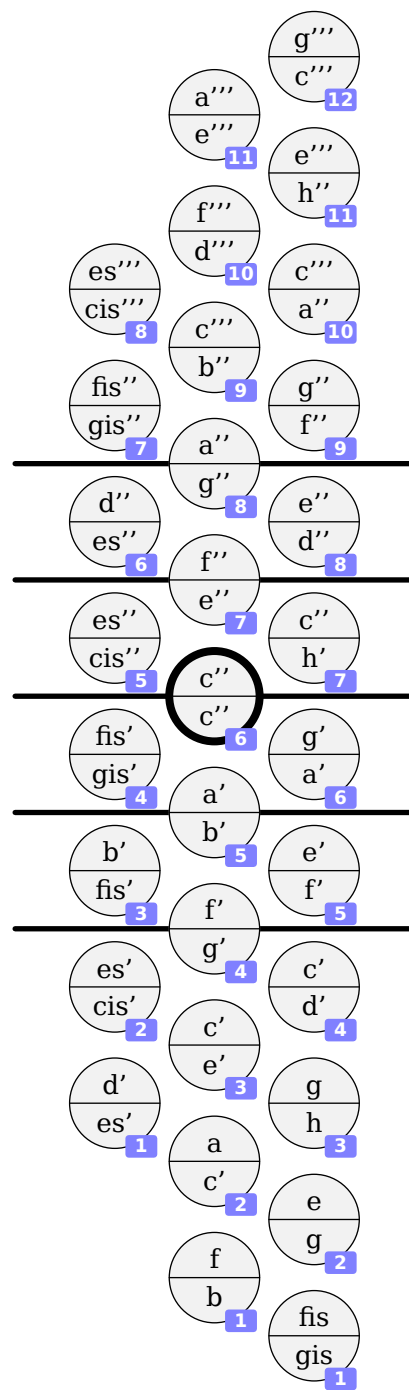
Bässe:

Griffschrift-
Kürzel



UNTEN

OBEN



Hohner Club Morino (in C/F)

Code: #'Club-Morino-CF
System: Club
Gleichton: c''
Töne 42 (Druck: 30, Zug: 33)
Reihen: 3 (2+1)
Knöpfe: 33 (23+10)
Bässe: 12



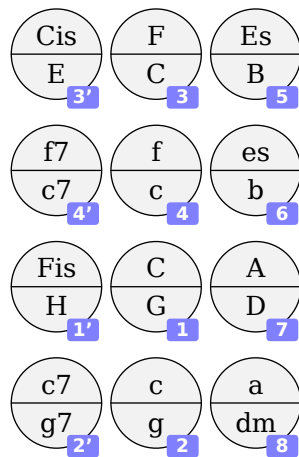
Info

Diskant:

Nummer
(pro Reihe)

Bässe:

Griffschrift-
Kürzel



UNTEN

O BEN

