

EYE OF THE TIGER

Moderately ♩ = 110

SURVIVOR

E-Bass:

$C_m^{(add2)}$ C^5 Bb^5 C^5 Bb^5 C^5 Eb/G Ab^5

fade in (4 Takte)

6 C^5 Bb^5 C^5 Bb^5 C^5 Eb/G Ab^5 C^5 Cm^7 Bb Cm^7

11 Bb Cm^7 C^5 Eb/G Ab^5 1. 2. C^5

1st Verse

16 $C_m^{(add2)}$ Ab Bb Cm

21 $C_m^{(add2)}$ Ab Bb Cm Cm

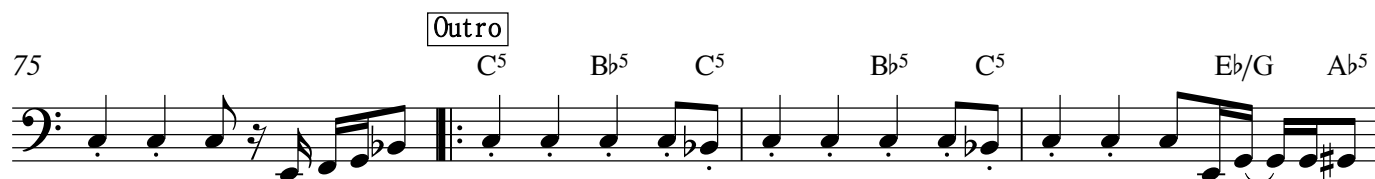
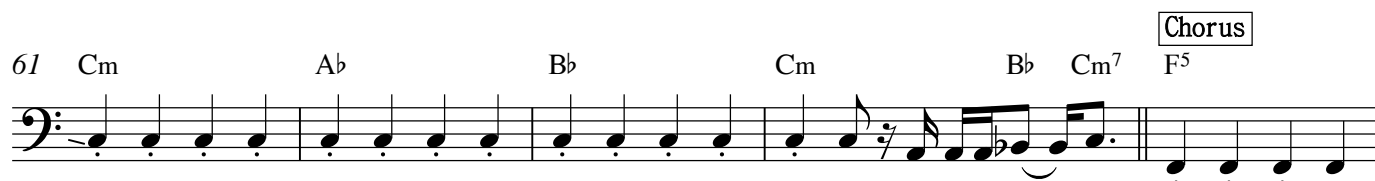
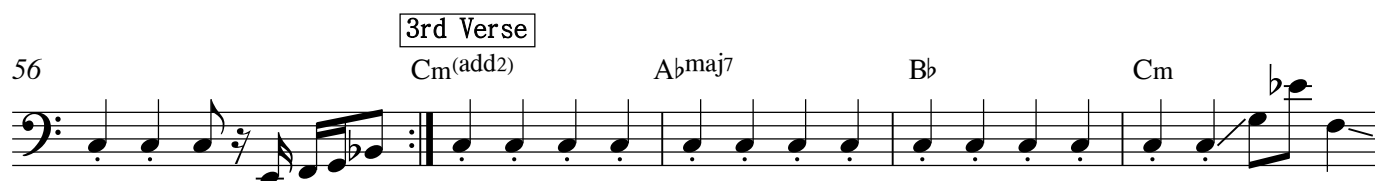
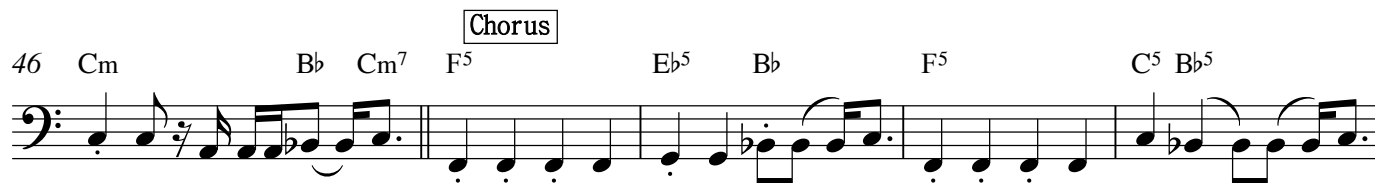
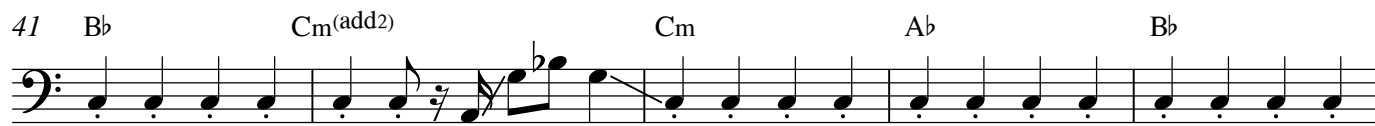
Chorus

26 Ab Bb Cm Cm^7 F^5 Eb^5 Bb

31 F^5 C^5 Bb^5 F^5 Eb^5 Bb Fm Eb/G

2nd Verse

36 Ab C^5 $C_m^{(add2)}$ Ab



(play 4 times and fade)

