

Kleines Präludium in c-moll

BWV 934

Johann Sebastian Bach

Measures 1-4 of the beginning of the piece. The treble clef staff features a melodic line with eighth and sixteenth notes, including trills in measures 2 and 4. The bass clef staff provides a simple harmonic accompaniment with quarter and eighth notes.

5

Measures 5-9. The treble clef staff continues the melodic development with eighth and sixteenth notes. The bass clef staff maintains the harmonic support with steady quarter notes.

10

Measures 10-14. The treble clef staff shows a more active melodic line with frequent sixteenth notes. The bass clef staff continues with a consistent harmonic accompaniment.

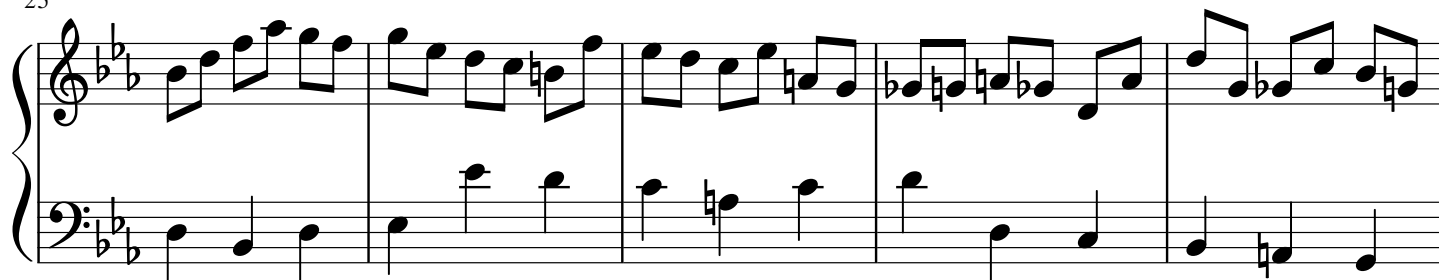
15

Measures 15-20. The treble clef staff features a melodic line with a long slur over measures 16-18. The piece concludes this section with a repeat sign in measure 20.

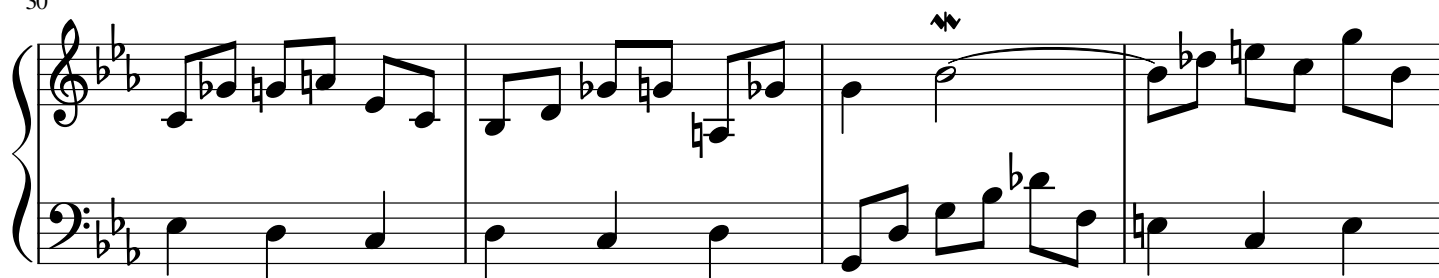
21

Measures 21-24. The section begins with a repeat sign in measure 21. The treble clef staff continues the melodic pattern, while the bass clef staff provides the harmonic foundation.

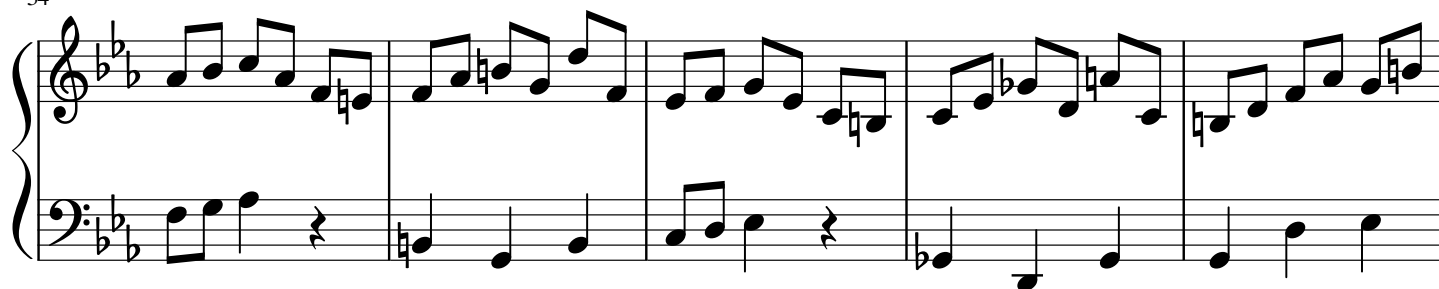
25



30



34



39

