

# SKALEN


DUR



1 2 3 4 5 6 7

D major scale (DUR) in treble clef, 4/4 time. Notes: D, E, F#, G, A, B, C. Fingering: 1, 2, 3, 4, 5, 6, 7.

3 MOLL NATÜRLICH



1 2 b3 4 5 b6 b7

Natural minor scale (MOLL NATÜRLICH) in treble clef. Notes: D, E, F, G, A, Bb, Cb. Fingering: 1, 2, b3, 4, 5, b6, b7.

5 HARMONISCH MOLL MELODISCH MOLL



1 2 b3 4 5 b6 7 1 2 b3 4 5 6 7

Harmonic minor scale (HARMONISCH MOLL) and melodic minor scale (MELODISCH MOLL) in treble clef. Notes: D, E, Fb, G, A, Bb, C (harmonic); D, E, Fb, G, A, B, C (melodic). Fingering: 1, 2, b3, 4, 5, b6, 7 for harmonic; 1, 2, b3, 4, 5, 6, 7 for melodic.

9 KIRCHENTONARTEN: IONISCH = DUR



Ionian mode (KIRCHENTONARTEN: IONISCH = DUR) in treble clef. Notes: D, E, F#, G, A, B, C. Fingering: 1, 2, 3, 4, 5, 6, 7.

11 LYDISCH (#4)



#4

Lydian mode (LYDISCH (#4)) in treble clef. Notes: D, E, F#, G#, A, B, C. Fingering: 1, 2, 3, #4, 5, 6, 7.

13 MIXOLYDISCH (b7)



b7

Mixolydian mode (MIXOLYDISCH (b7)) in treble clef. Notes: D, E, F#, G, A, Bb, C. Fingering: 1, 2, 3, 4, 5, b7, 7.

15 ÄOLISCH = MOLL NATÜRLICH



1 2 b3 4 5 b6 b7

Aeolian mode (ÄOLISCH = MOLL NATÜRLICH) in treble clef. Notes: D, E, F, G, A, Bb, Cb. Fingering: 1, 2, b3, 4, 5, b6, b7.


17 DORISCH (6)



6

Dorian mode (DORISCH (6)) in treble clef. Notes: D, E, F, G, A, B, Cb. Fingering: 1, 2, 3, 4, 5, 6, 7.

19 PHRYGISCH (b2)



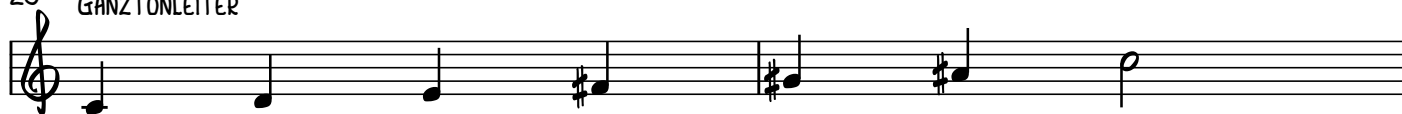
b2

Phrygian mode (PHRYGISCH (b2)) in treble clef. Notes: D, Eb, F, G, A, B, C. Fingering: b2, 3, 4, 5, 6, 7, 7.

2  
21 LOKRISCH (= PHRYGISCH  $\flat 5$ )



23 GANZTONLEITER



25 CHROMATIK



29 PENTATONIK



31 ZIGNEUNER-MOLL (Hm  $\sharp 4$ )

